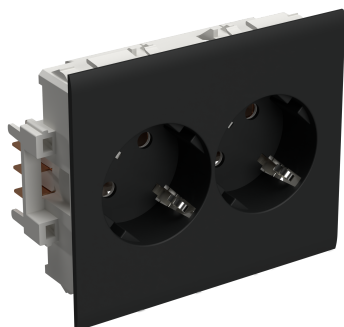


Socket outlet 2-way slave black 9017

Reference STA501012



Activity	Installation systems
Product family	Wiring Devices
Brand	Stago
Range	WGX-W

Base

Activity	Installation systems
Product family	Wiring Devices
Brand	Stago
Range	WGX-W
GTIN	7321679003080

Commercial and Web

Short description	Socket outlet 2-way slave black 9017
Medium description	Socket outlet 2-way slave F80 - plastic halogen free - black RAL9017
Length	116 mm
Width	84 mm
Height	43 mm
Material	Plastic
Colour	Black RAL9017
Wiring Device Component Type	W816

ETIM (EC000125-Socket outlet)

Model (EF000010)	Protective contact (type F)
Protective contact (EF001033)	*
Protective earth pin round (EF012000)	*
Number of active pins (round) (EF011998)	4
Number of active pins (flat) (EF011999)	0

With signal lamp (EF000198)	No
With built (EF009258)	No
Type of USB power supply (EF015873)	*
Number of units (EF000074)	*
Number of modules (module system) (EF009573)	*
Number of socket outlets switchable (EF008814)	0
Number of phases (EF000351)	1
Imprint/indication (EF003823)	None
Connection type (EF000124)	Other
With hinged lid (EF000117)	No
With enhanced contact protection (EF000389)	Yes
Label space/information surface (EF001035)	No
Colour (EF000007)	Black
RAL (EF003882)	9017
Metallic colour (EF015260)	No
Transparent (EF006243)	No
Lockable (EF000113)	No
Eject (EF001051)	No
Insulated mounting (EF001588)	Yes
With function lighting (EF008861)	No
With orientation lighting (EF008862)	No
Over voltage protection (EF001332)	No
Fault current protection (EF001333)	No
With miniature fuse (EF006571)	No
Special power supply (EF001334)	No special power supply
Mounting method (EF000003)	Wall duct
Type of fastening (EF002442)	Snap mounting (engagement)
Material (EF002169)	Plastic
Material quality (EF001257)	Thermoplastic
Halogen free (EF000025)	Yes
Surface protection (EF000139)	Lacquered
Surface finishing (EF006569)	Matt
Anti (EF023790)	No
With on/off switch (EF000488)	No
With loop through function (EF006604)	No
Rotated central insert (EF001331)	Yes
Nominal current (EF000001)	16 A
Nominal voltage (EF000002)	250 V
Frequency (EF000416)	50 Hz
Rated fault current (EF002358)	* mA
Suitable for degree of protection (IP) (EF006755)	IP20
Impact strength (EF004293)	*
Device width (EF008808)	84 mm
Device height (EF008809)	52 mm
Device depth (EF008810)	116 mm

Compatible with Apple HomeKit (EF014925)	No
Compatible with Google Assistant (EF014926)	No
Min. depth of built (EF012278)	52 mm
Compatible with Amazon Alexa (EF014927)	No
IFTTT support available (EF011072)	No
For heavy conditions (according to VDE) (EFDE0005)	No

Logistic

Pack 1 type	Bag
Quantity pack 1	1
Weight pack 1	0.16 kg
Length pack 1	116 mm
Width pack 1	84 mm
Height pack 1	43 mm
Pack 2 type	Carton
Quantity pack 2	10
Weight pack 2	2 kg
Length pack 2	290 mm
Width pack 2	240 mm
Height pack 2	90 mm
Pack 3 type	Carton
Quantity pack 3	40
Weight pack 3	8 kg
Length pack 3	395 mm
Width pack 3	260 mm
Height pack 3	310 mm
Pack 4 type	Pallet
Quantity pack 4	720
Weight pack 4	150 kg
Length pack 4	1200 mm
Width pack 4	800 mm
Height pack 4	770 mm
Customs code	85366990
Net weight	0.16 kg
Country of origin	CN

Certification

ETIM class	EC000125
------------	----------

Status product

Product status	Commercialized
----------------	----------------

For the latest information check http://wibe-group.com/cable-support-systems/installation-systems/wiring-devices/socket-outlets_wd/socket-outlet-2-w-slave-black