

FBS 4-6 BU - Plug-in bridge

3036958

<https://www.phoenixcontact.com/pc/products/3036958>



Please be informed that the data shown in this PDF document is generated from our online catalog. Please find the complete data in the user documentation. Our general terms of use for downloads are valid.

Plug-in bridge, pitch: 6.2 mm, number of positions: 4, color: blue



Your advantages

- The 2- to 50-pos. jumpers can bridge up to 50 terminal blocks in the two bridge shafts of the CLIPLINE complete system in one step

Technical data

Product properties

Product type	Jumper
Number of positions	4
Pitch	6.2 mm

Data management status

Article revision	05
------------------	----

Electrical properties

Maximum load current	32 A (The current values for the jumpers can deviate when used in different modular terminal blocks. The precise values can be found in the accessories data for the respective modular terminal blocks.)
----------------------	---

Connection data

Maximum load current	32 A (The current values for the jumpers can deviate when used in different modular terminal blocks. The precise values can be found in the accessories data for the respective modular terminal blocks.)
----------------------	---

Dimensions

Width	23.1 mm
Height	23 mm
Depth	23 mm
Pitch	6.2 mm

Material specifications

Color	blue (RAL 5015)
Material	Copper
Flammability rating according to UL 94	V0
Insulating material	PA

Environmental and real-life conditions

Ambient conditions

Ambient temperature (operation)	-60 °C ... 110 °C (Operating temperature range incl. self-heating; for max. short-term operating temperature, see RTI Elec.)
Ambient temperature (storage/transport)	-25 °C ... 60 °C (for a short time, no longer than 24 h, -60°C to +70°C)
Ambient temperature (assembly)	-5 °C ... 70 °C
Ambient temperature (actuation)	-5 °C ... 70 °C
Permissible humidity (operation)	20 % ... 90 %
Permissible humidity (storage/transport)	30 % ... 70 %

Mounting

FBS 4-6 BU - Plug-in bridge

3036958

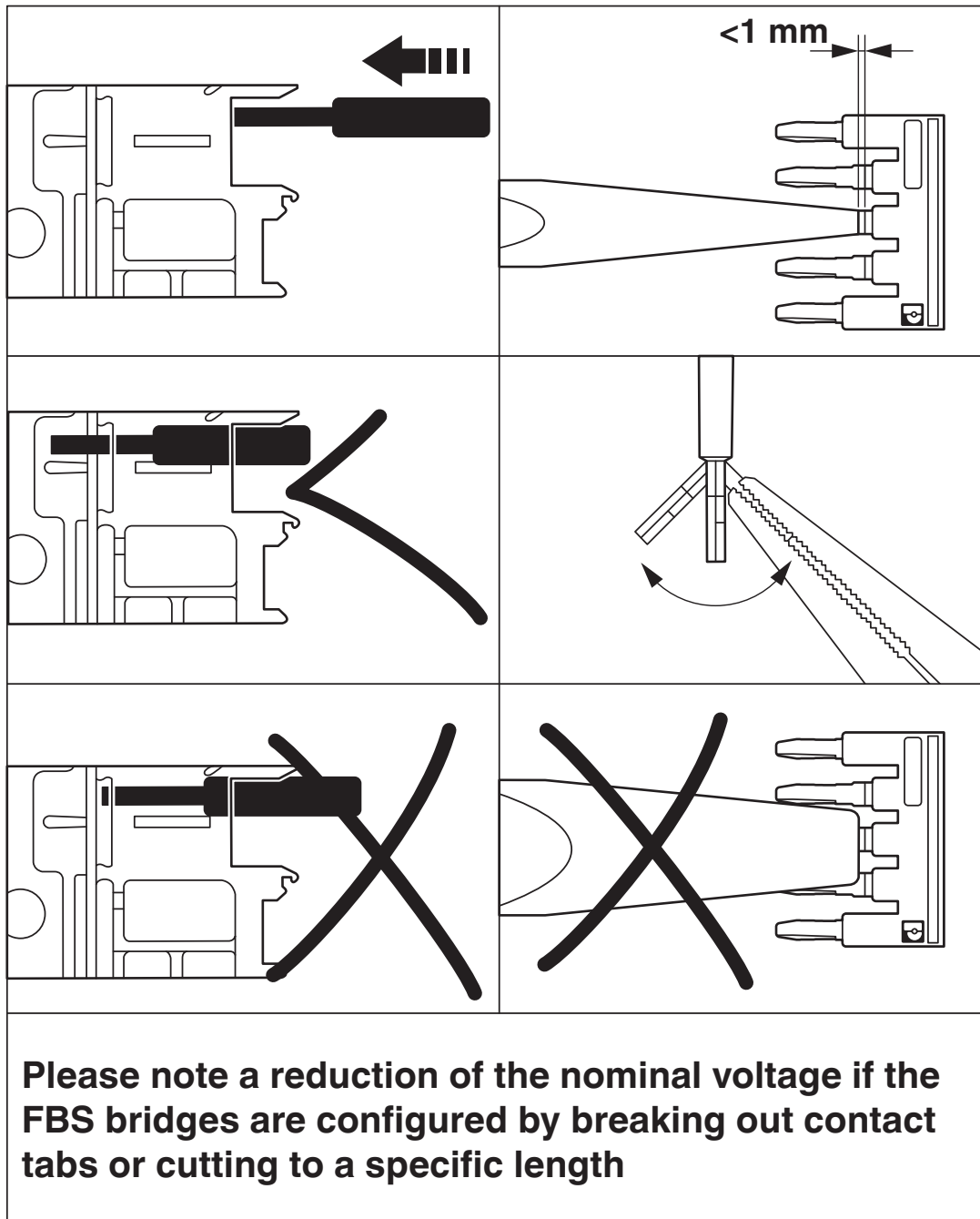
<https://www.phoenixcontact.com/pc/products/3036958>



Mounting type	Plug-in mounting
---------------	------------------

Drawings

Schematic diagram



FBS 4-6 BU - Plug-in bridge

3036958

<https://www.phoenixcontact.com/pc/products/3036958>



Classifications

ECLASS

ECLASS-11.0	27141140
ECLASS-12.0	27141140
ECLASS-13.0	27250303

ETIM

ETIM 9.0	EC000489
----------	----------

UNSPSC

UNSPSC 21.0	39121400
-------------	----------

FBS 4-6 BU - Plug-in bridge

3036958

<https://www.phoenixcontact.com/pc/products/3036958>



Environmental product compliance

EU RoHS

Fulfills EU RoHS substance requirements	Yes, No exemptions
---	--------------------

China RoHS

Environment friendly use period (EFUP)	EFUP-E
	No hazardous substances above the limits

EU REACH SVHC

REACH candidate substance (CAS No.)	No substance above 0.1 wt%
-------------------------------------	----------------------------

Phoenix Contact 2024 © - all rights reserved
<https://www.phoenixcontact.com>

PHOENIX CONTACT GmbH & Co. KG
Flachmarktstraße 8
D-32825 Blomberg
+49 (0) 5235-3 00
info@phoenixcontact.com