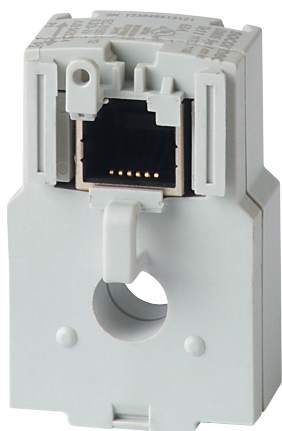


48290501

Solid current sensor TE-18 18mm 25-63A



Strong points

- Plug & Play
- Accuracy as per standard IEC 61557-12
- Installation

General characteristics

- Range from 5 to 2000A.
- used with DIRIS Digiware, DIRIS A-40 and DIRIS B.

Compliance with standards

- IEC 61557-12
- ISO 14025
- UL

Access to resources (ex: manuals)

TE smart current sensors measure the load currents of an electrical system and send the data to meters and measurement hubs via an RJ12 plug-and-play output. Thanks to a wide measurement range, TE current sensors cover the full current range of 5 to 2000 A, with 7 references. TE solid current sensors can be connected to DIRIS Digiware, DIRIS A-40 and DIRIS B via a rapid RJ12 connection. Numerous accessories are available to aid the installation of sensors in any type of cabinet.

Classification

| | |
|------------|----------|
| UNSPSC | 83101808 |
| ETIM Class | EC002048 |
| IGCC | 6042 |

Commerce

| | |
|-------------------|------------|
| Effective date | 2013-11-22 |
| Country of origin | FR |

ETIM - Electrical characteristics

| | |
|-------------------------------------|-------|
| Rated primary current [A] | 63 |
| Rated secondary current [A] | 0.1 |
| Rated secondary apparent power [VA] | 0.1 |
| Accuracy class | 0.2S |
| Overcurrent limiting factor | FS 10 |
| Calibrated | Yes |

ETIM - Mechanical characteristics

| | |
|-------------------------|--------------------|
| With contact protection | Yes |
| Height opening [mm] | 8.6..8.6 |
| Width opening [mm] | 8.6..8.6 |
| Opening diameter [mm] | 8.6 |
| Snap mounting | Yes |
| With copper rail | Yes |
| Secondary connection | Plug-in connection |

ETIM - Technical features

| | |
|--------------------------|--------------------------------|
| Model | Through-feed current converter |
| Number of primary inputs | 1 |

Logistics

| | |
|----------------------------|---------------|
| GTIN/EAN | 3596032776473 |
| Customs number | 8504312990 |
| Price unit | PC |
| Weight of the packing unit | 0.03 |
| Length of the packing unit | 0.015 |
| Width of the packing unit | 0.11 |
| Depth of the packing unit | 0.13 |

Norms

| | |
|-------------------------|------------|
| Conformity to standards | IEC UL |
|-------------------------|------------|

Technical Characteristics

| | |
|-------------------------|----------|
| Model | TE |
| Opening | Diam.8,6 |
| Rated current | 63 |
| Secondary rated current | RJ12 |