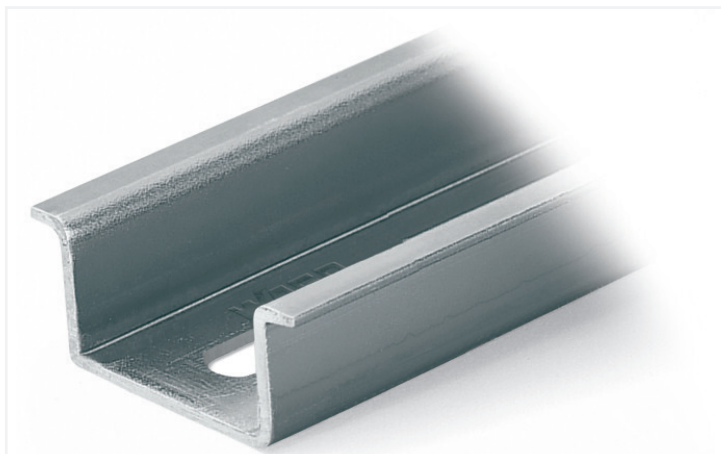


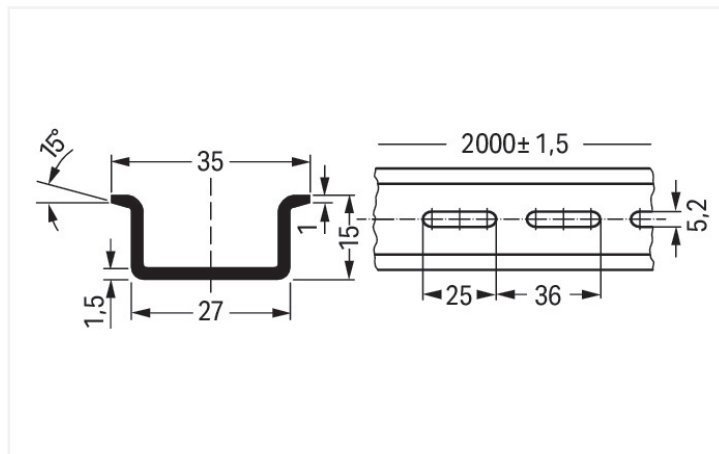
Data Sheet | Item Number: 210-197

Steel carrier rail; 35 x 15 mm; 1.5 mm thick; 2 m long; slotted; similar to EN 60715; silver-colored

<https://www.wago.com/210-197>



Color: ■ silver-colored



Dimensions in mm

Physical data

| | |
|--------|------------------------|
| Width | 2000 mm / 78.74 inches |
| Height | 15 mm / 0.591 inches |
| Depth | 35 mm / 1.378 inches |

Material data

| | |
|-----------|----------------|
| Color | silver-colored |
| Fire load | 0 MJ |
| Weight | 1235 g |

Commercial data

| | |
|-----------------------|--------------------------------|
| Product Group | 2 (Terminal Block Accessories) |
| eCl@ss 10.0 | 27-40-06-02 |
| eCl@ss 9.0 | 27-40-06-02 |
| ETIM 8.0 | EC001285 |
| ETIM 7.0 | EC001285 |
| PU (SPU) | 10 (1) pcs |
| Packaging type | Box |
| Country of origin | IT |
| GTIN | 4017332102759 |
| Customs tariff number | 72169180000 |

Environmental Product Compliance

| | |
|------------------------|-------------------------|
| RoHS Compliance Status | Compliant, No Exemption |
|------------------------|-------------------------|

Downloads

Environmental Product Compliance

| | | | |
|--|--|--|---|
| Compliance Search | | | |
| Environmental Product Compliance 210-197 | | | ↓ |

Documentation

| | | | |
|----------|------------|-----------------|---|
| Bid Text | | | |
| 210-197 | 19.02.2019 | xml 2.71 KB | ↓ |
| 210-197 | 31.08.2017 | doc 23.50 KB | ↓ |

CAD/CAE-Data

| | | | |
|----------------------|--|--|---|
| CAD data | | | |
| 2D/3D Models 210-197 | | | ↓ |

| | | | |
|---------------------------|--|--|---|
| CAE data | | | |
| EPLAN Data Portal 210-197 | | | ↓ |
| WSCAD Universe 210-197 | | | ↓ |
| ZUKEN Portal 210-197 | | | ↓ |

1 Compatible Products

1.1 Optional Accessories

1.1.1 Installation

1.1.1.1 Mounting accessories



Item No.: 210-148
Angled support bracket; without screw; silver-colored



Item No.: 209-137
Mounting adapter; can be used as end stop; 6.5 mm wide; gray



Item No.: 210-149
Screw M 5 x 8; for angled support bracket



Item No.: 249-117
Screwless end stop; 10 mm wide; for DIN-rail 35 x 15 and 35 x 7.5; gray



Item No.: 249-197
Screwless end stop; 14 mm wide; for DIN-rail 35 x 15 and 35 x 7.5; gray



Item No.: 249-116
Screwless end stop; 6 mm wide; for DIN-rail 35 x 15 and 35 x 7.5; gray

1.1.2 Marking

1.1.2.1 Label



Item No.: 210-808

Labels; for Smart Printer; 9.5 x 25 mm;
white



Item No.: 210-708

Labels; for TP printers; 9.5 x 25 mm; white