

Data Sheet | Item Number: 2016-499

Step-down jumper; from 2016/2010 to 2010/2006/2004/2002 series; from 2216/2210 to 2210/2206/2204/2202 series; insulated; light gray

<https://www.wago.com/2016-499>



Color: ■ light gray

Electrical data

Ratings per IEC/EN

Rated current	57 A
---------------	------

Physical data

Jumper assignment	1-2
-------------------	-----

Material data

Note (material data)

[Information on material specifications can be found here](#)

Color	light gray
Material group	I
Insulation material	Polyamide (PA66)
Flammability class per UL94	V0
Fire load	0.016 MJ
Weight	3.3 g

Commercial data

Product Group	22 (TOPJOB S)
eCl@ss 10.0	27-14-11-40
eCl@ss 9.0	27-14-11-40
ETIM 8.0	EC000489
ETIM 7.0	EC000489
PU (SPU)	25 pcs
Packaging type	Bag
Country of origin	DE
GTIN	4055143702461
Customs tariff number	85366990990

Environmental Product Compliance	
RoHS Compliance Status	Compliant, No Exemption

Approvals / Certificates

Declarations of conformity and manufacturer's declarations



Approval	Standard	Certificate Name
Railway WAGO GmbH & Co. KG	-	Railway Ready

Downloads

Environmental Product Compliance

Compliance Search	
Environmental Product Compliance 2016-499	↓

Documentation

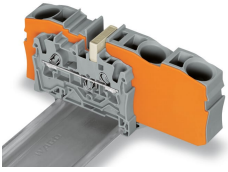
Additional Information		Bid Text				
Technical Section	pdf 2240.62 KB	↓	2016-499	19.02.2019	xml 2.55 KB	↓
			2016-499	28.04.2017	doc 23.50 KB	↓

CAD/CAE-Data

CAD data		CAE data	
2D/3D Models 2016-499	↓	EPLAN Data Portal 2016-499	↓
		WSCAD Universe 2016-499	↓
		ZUKEN Portal 2016-499	↓

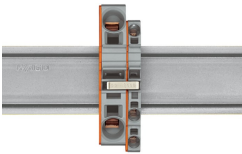
Installation Notes

Commoning



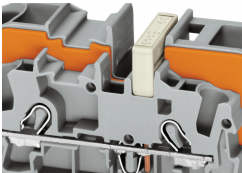
Step-down jumpers common terminal blocks of different sizes, without losing a conductor clamping point. This can be beneficial on long conductor runs where voltage drop can be a problem. A large conductor can be easily connected to smaller conductors at the distribution point. Commoning may be made in either direction using the special thin end plate to cover the open side. Additional through terminal blocks having a smaller cross-section may be commoned using push-in type jumper bars.

Commoning



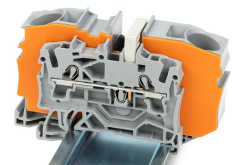
Using step-down jumpers, an end plate must be inserted between the terminal blocks to be commoned.

Commoning



Commoning with step-down jumpers.

Commoning



Step-down jumper (2016-499) commons 16/10 mm² (16/8 AWG) terminal blocks (2016/2010 Series) with 10/6/4/2.5 mm² (8/10/12/14 AWG) terminal blocks (2010/2006/2004/2002 Series).