

Data Sheet | Item Number: 2009-416

Push-in type wire jumper; 1.5 mm²; insulated; 250 mm long; black

<https://www.wago.com/2009-416>



Color: ■ black

Similar to illustration

Notes

Safety information

Push down the wire jumper until fully inserted!

Electrical data

Ratings per IEC/EN

Nominal voltage (III/3)	800 V
Rated impulse voltage (III/3)	8 kV
Rated current	18 A

Connection data

Connection 1

Solid conductor	1.5 mm ²
-----------------	---------------------

Mechanical data

Wire length of wire jumpers	250 mm
-----------------------------	--------

Material data

Note (material data)

[Information on material specifications can be found here](#)

Color	black
Fire load	0 MJ
Weight	5.6 g

Commercial data	
Product Group	2 (Terminal Block Accessories)
eCl@ss 10.0	27-14-11-40
eCl@ss 9.0	27-14-11-40
ETIM 8.0	EC000489
ETIM 7.0	EC000489
PU (SPU)	100 (10) pcs
Packaging type	Box
Country of origin	DE
GTIN	4045454302252
Customs tariff number	85444290900

Environmental Product Compliance	
RoHS Compliance Status	Compliant, No Exemption

Downloads

Environmental Product Compliance

Compliance Search	
Environmental Product Compliance 2009-416	↓

Documentation

Additional Information		
Technical Section	pdf 2240.62 KB	↓

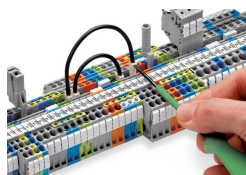
Bid Text			
2009-416	19.02.2019	xml 2.77 KB	↓
2009-416	28.04.2017	doc 24.00 KB	↓

CAD/CAE-Data

CAE data	
EPLAN Data Portal 2009-416	↓
WSCAD Universe 2009-416	↓

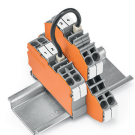
Installation Notes

Commoning



Push down the wire jumper until fully inserted. Lift the jumper with an operating tool for rewiring.

Commoning



Push-in type wire jumpers common terminal blocks over longer distances and across multiple levels.