

# PTFIX 6/18X2,5 VT - Distribution block



3273390

<https://www.phoenixcontact.com/gb/products/3273390>

Please be informed that the data shown in this PDF document is generated from our online catalog. Please find the complete data in the user documentation. Our general terms of use for downloads are valid.



Distribution block, Basic terminal block with supply, nom. voltage: 450 V, nominal current: 24 A, number of connections: 19, connection method: Push-in connection, Load contact, cross section: 0.14 mm<sup>2</sup> - 4 mm<sup>2</sup>, Push-in connection, Line contact, Rated cross section: 6 mm<sup>2</sup>, cross section: 0.5 mm<sup>2</sup> - 10 mm<sup>2</sup>, mounting type: for snapping onto a DIN rail adapter, Direct mounting with flange, Free-hanging, color: violet

## Your advantages

- Flexible use, thanks to DIN rail mounting, direct mounting or adhesive mounting
- Clear wiring, thanks to eleven different color variants
- Time-saving conductor connection, thanks to tool-free Push-in direct connection technology
- Time savings of up to 80 %, thanks to ready-to-mount blocks without manual bridging
- Space savings of up to 50 % on the DIN rail, thanks to transverse mounting

## Commercial data

|                                      |                     |
|--------------------------------------|---------------------|
| Item number                          | 3273390             |
| Packing unit                         | 8 pc                |
| Minimum order quantity               | 8 pc                |
| Sales key                            | BEA124              |
| Product key                          | BEA124              |
| Catalog page                         | Page 443 (C-1-2019) |
| GTIN                                 | 4055626392653       |
| Weight per piece (including packing) | 40.55 g             |
| Weight per piece (excluding packing) | 40.55 g             |
| Customs tariff number                | 85369010            |
| Country of origin                    | PL                  |

# PTFIX 6/18X2,5 VT - Distribution block



3273390

<https://www.phoenixcontact.com/gb/products/3273390>

## Technical data

### Notes

|         |  |
|---------|--|
| General | the blocks can be bridged with one another via the conductor shaft, for corresponding plug-in bridges, see accessories   |
| General |  |
| Note    | The maximum load current of a single clamping unit must not be exceeded.<br>For power distribution applications, IEC 60364-4-43:2008; modified + corrigendum Okt. 2008 (DIN VDE 0100-430:2010-10) section 433.2 ff must be observed! |

### Product properties

|                       |                            |
|-----------------------|----------------------------|
| Product type          | Distributor terminal block |
| Number of connections | 19                         |
| Number of rows        | 1                          |
| Potentials            | 1                          |

### Insulation characteristics

|                      |     |
|----------------------|-----|
| Overvoltage category | III |
| Degree of pollution  | 3   |

### Electrical properties

|   |        |
|---|--------|
| Rated surge voltage                             | 6 kV   |
| Maximum power dissipation for nominal condition | 0.77 W |

### Connection data

|                                 |                     |
|---------------------------------|---------------------|
| Service Entrance                | yes                 |
| Number of connections per level | 19                  |
| Nominal cross section           | 2.5 mm <sup>2</sup> |
| Rated cross section AWG         | 14                  |

### Load contact

|   |  |
|---|--|
| Stripping length  | 8 mm ... 10 mm   |
| Internal cylindrical gage   | A3   |
| Connection in acc. with standard                                  | IEC 60998-2-2  |
| Conductor cross section rigid                                     | 0.14 mm <sup>2</sup> ... 4 mm <sup>2</sup>             |
| Cross section AWG   | 26 ... 12 (converted acc. to IEC)                      |
| Conductor cross section flexible                                  | 0.14 mm <sup>2</sup> ... 2.5 mm <sup>2</sup>           |
| Conductor cross section, flexible [AWG]                           | 26 ... 14 (converted acc. to IEC)                      |
| Conductor cross-section flexible (ferrule without plastic sleeve) | 0.14 mm <sup>2</sup> ... 2.5 mm <sup>2</sup>           |
| Flexible conductor cross section (ferrule with plastic sleeve)    | 0.14 mm <sup>2</sup> ... 2.5 mm <sup>2</sup>           |
| Nominal current   | 24 A   |
| Maximum load current  | 32 A (with 4 mm <sup>2</sup> conductor cross section)  |
| Maximum total current   | 57 A (with 10 mm <sup>2</sup> conductor cross section) |

# PTFIX 6/18X2,5 VT - Distribution block



3273390

<https://www.phoenixcontact.com/gb/products/3273390>

|                 |       |
|-----------------|-------|
| Nominal voltage | 450 V |
|-----------------|-------|

## Line contact

|   |  |
|---|--|
| Stripping length  | 10 mm ... 12 mm  |
| Connection in acc. with standard  | IEC 60998-2-2  |
| Conductor cross section rigid   | 0.5 mm <sup>2</sup> ... 10 mm <sup>2</sup>             |
| Cross section AWG   | 20 ... 8 (converted acc. to IEC)                       |
| Conductor cross section flexible  | 0.5 mm <sup>2</sup> ... 10 mm <sup>2</sup>             |
| Conductor cross section, flexible [AWG]   | 20 ... 10 (converted acc. to IEC)                      |
| Conductor cross-section flexible (ferrule without plastic sleeve)   | 0.5 mm <sup>2</sup> ... 6 mm <sup>2</sup>              |
| Flexible conductor cross section (ferrule with plastic sleeve)  | 0.5 mm <sup>2</sup> ... 6 mm <sup>2</sup>              |
| Conductor cross-section flexible (2 conductors with the same cross-section, with TWIN ferrule and plastic sleeve) | 0.5 mm <sup>2</sup> ... 1.5 mm <sup>2</sup>            |
| 2 conductors with the same cross section, flexible, with TWIN ferrule with plastic sleeve                         | 0.5 mm <sup>2</sup> ... 1.5 mm <sup>2</sup>            |
| Nominal current   | 41 A (with 6 mm <sup>2</sup> conductor cross section)  |
| Maximum load current  | 57 A (with 10 mm <sup>2</sup> conductor cross section) |
| Nominal cross section   | 6 mm <sup>2</sup>                                      |

## Load contact Connection cross sections directly pluggable

|   |  |
|---|--|
| Conductor cross section rigid                                     | 0.34 mm <sup>2</sup> ... 4 mm <sup>2</sup>   |
| Conductor cross section, rigid [AWG]                              | 24 ... 12 (converted acc. to IEC)            |
| Conductor cross-section flexible (ferrule without plastic sleeve) | 0.34 mm <sup>2</sup> ... 2.5 mm <sup>2</sup> |
| Flexible conductor cross section (ferrule with plastic sleeve)    | 0.34 mm <sup>2</sup> ... 2.5 mm <sup>2</sup> |

## Line contact Connection cross sections directly pluggable

|   |  |
|---|--|
| Conductor cross section rigid                                     | 1 mm <sup>2</sup> ... 10 mm <sup>2</sup> |
| Conductor cross-section flexible (ferrule without plastic sleeve) | 1 mm <sup>2</sup> ... 6 mm <sup>2</sup>  |
| Flexible conductor cross section (ferrule with plastic sleeve)    | 1 mm <sup>2</sup> ... 6 mm <sup>2</sup>  |

## Dimensions

|        |         |
|--------|---------|
| Width  | 56.5 mm |
| Height | 28.6 mm |
| Depth  | 21.7 mm |

## Material specifications

|   |             |
|---|-------------|
| Color   | violet      |
| Flammability rating according to UL 94                                  | V0          |
| Insulating material group   | I           |
| Insulating material   | PA          |
| Static insulating material application in cold                          | -60 °C      |
| Temperature index of insulation material (DIN EN 60216-1 (VDE 0304-21)) | 130 °C      |
| Relative insulation material temperature index (Elec., UL 746 B)        | 130 °C      |
| Fire protection for rail vehicles (DIN EN 45545-2) R22                  | HL 1 - HL 3 |
| Fire protection for rail vehicles (DIN EN 45545-2) R23                  | HL 1 - HL 3 |

# PTFIX 6/18X2,5 VT - Distribution block



3273390

<https://www.phoenixcontact.com/gb/products/3273390>

|   |             |
|---|-------------|
| Fire protection for rail vehicles (DIN EN 45545-2) R24  | HL 1 - HL 3 |
| Fire protection for rail vehicles (DIN EN 45545-2) R26  | HL 1 - HL 3 |
| Calorimetric heat release NFPA 130 (ASTM E 1354)        | 28 MJ/kg    |
| Surface flammability NFPA 130 (ASTM E 162)              | passed      |
| Specific optical density of smoke NFPA 130 (ASTM E 662) | passed      |
| Smoke gas toxicity NFPA 130 (SMP 800C)                  | passed      |

## Mechanical properties

### Mechanical data

|                 |    |
|-----------------|----|
| Open side panel | No |
|-----------------|----|

## Mechanical tests

### Attachment on the carrier

|                         |   |
|-------------------------|---|
| DIN rail/fixing support | NS 35/NS 15   |
| Result                  | Test passed   |
| Note                    | <p>When aligning several blocks, it is recommended to either place a DIN rail adapter underneath the connection point or a flange element between the blocks.</p> <p>For versions with 6 or 7 connections, it is enough to place one DIN rail adapter centrally per block and place flange elements after every other block.</p> <p>When using the DIN rail adapter PTFIX-NS35, an aligned block must not protrude by more than a half.</p> |

## Environmental and real-life conditions

### Needle-flame test

|                  |             |
|------------------|-------------|
| Time of exposure | 30 s        |
| Result           | Test passed |

### Oscillation/broadband noise

|                        |  |
|------------------------|--|
| Specification          | DIN EN 50155 (VDE 0115-200):2008-03            |
| Spectrum               | Service life test category 2, bogie-mounted    |
| Frequency              | $f_1 = 5 \text{ Hz}$ to $f_2 = 250 \text{ Hz}$ |
| ASD level              | $6.12 \text{ (m/s}^2\text{)}^2\text{/Hz}$      |
| Acceleration           | 3.12g  |
| Test duration per axis | 5 h  |
| Test directions        | X-, Y- and Z-axis                              |
| Result                 | Test passed                                    |

### Shocks

|                                |                                     |
|--------------------------------|-------------------------------------|
| Specification                  | DIN EN 50155 (VDE 0115-200):2008-03 |
| Pulse shape                    | Half-sine                           |
| Acceleration                   | 30g                                 |
| Shock duration                 | 18 ms                               |
| Number of shocks per direction | 3                                   |

# PTFIX 6/18X2,5 VT - Distribution block



3273390

<https://www.phoenixcontact.com/gb/products/3273390>

|                 |                                   |
|-----------------|-----------------------------------|
| Test directions | X-, Y- and Z-axis (pos. and neg.) |
| Result          | Test passed                       |

## Ambient conditions

|  |  |
|--|--|
| Ambient temperature (operation)          | -60 °C ... 110 °C (Operating temperature range incl. self-heating; for max. short-term operating temperature, see RTI Elec.) |
| Ambient temperature (storage/transport)  | -25 °C ... 60 °C (for a short time, no longer than 24 h, -60°C to +70°C)   |
| Ambient temperature (assembly)           | -5 °C ... 70 °C  |
| Ambient temperature (actuation)          | -5 °C ... 70 °C  |
| Permissible humidity (operation)         | 20 % ... 90 %  |
| Permissible humidity (storage/transport) | 30 % ... 70 %  |

## Standards and regulations

|                                  |               |
|----------------------------------|---------------|
| Connection in acc. with standard | IEC 60998-2-2 |
|                                  | IEC 60998-2-2 |

## Mounting

|               |                                      |
|---------------|--------------------------------------|
| Mounting type | for snapping onto a DIN rail adapter |
|               | Direct mounting with flange          |
|               | Free-hanging                         |

# PTFIX 6/18X2,5 VT - Distribution block



3273390

<https://www.phoenixcontact.com/gb/products/3273390>

## Drawings

Circuit diagram



# PTFIX 6/18X2,5 VT - Distribution block



3273390

<https://www.phoenixcontact.com/gb/products/3273390>

## Approvals

To download certificates, visit the product detail page: <https://www.phoenixcontact.com/gb/products/3273390>

| <b>DNV</b><br>Approval ID: TAE00002TT-04 |                       |                       |                   |                      |
|--|-----------------------|-----------------------|-------------------|----------------------|
|  | Nominal voltage $U_N$ | Nominal current $I_N$ | Cross section AWG | Cross section $mm^2$ |
|  | 500 V                 | 24 A                  | -                 | -                    |

| <b>CSA</b><br>Approval ID: 13631 |                       |                       |                   |                      |
|----------------------------------|-----------------------|-----------------------|-------------------|----------------------|
|                                  | Nominal voltage $U_N$ | Nominal current $I_N$ | Cross section AWG | Cross section $mm^2$ |
| Use group B                      |                       |                       |                   |                      |
| Output                           | 300 V                 | 20 A                  | 26 - 12           | -                    |
| Input                            | 300 V                 | 50 A                  | 20 - 8            | -                    |
| Use group C                      |                       |                       |                   |                      |
| Output                           | 300 V                 | 20 A                  | 26 - 12           | -                    |
| Input                            | 300 V                 | 50 A                  | 20 - 8            | -                    |
| Use group D                      |                       |                       |                   |                      |
| Input                            | 600 V                 | 5 A                   | 20 - 8            | -                    |

| <b>IECEE CB Scheme</b><br>Approval ID: DE1-63086 |                       |                       |                   |                      |
|--|-----------------------|-----------------------|-------------------|----------------------|
|  | Nominal voltage $U_N$ | Nominal current $I_N$ | Cross section AWG | Cross section $mm^2$ |
|  | 450 V                 | 41 A                  | -                 | - 6                  |

| <b>EAC</b><br>Approval ID: RU C-DE.BL08.B.00644 |  |  |  |  |
|---|--|--|--|--|
|---|--|--|--|--|

| <b>cULus Recognized</b><br>Approval ID: E60425 |                       |                       |                   |                      |
|--|-----------------------|-----------------------|-------------------|----------------------|
|  | Nominal voltage $U_N$ | Nominal current $I_N$ | Cross section AWG | Cross section $mm^2$ |
| Use group B                                    |                       |                       |                   |                      |
| Output   | 300 V                 | 20 A                  | 26 - 12           | -                    |
| Input  | 300 V                 | 50 A                  | 20 - 8            | -                    |
| Use group C                                    |                       |                       |                   |                      |
| Output   | 300 V                 | 20 A                  | 26 - 12           | -                    |
| Input  | 300 V                 | 50 A                  | 20 - 8            | -                    |
| Use group D                                    |                       |                       |                   |                      |
| Output   | 600 V                 | 5 A                   | 26 - 12           | -                    |
| Input  | 600 V                 | 5 A                   | 20 - 8            | -                    |

# PTFIX 6/18X2,5 VT - Distribution block



3273390

<https://www.phoenixcontact.com/gb/products/3273390>



**LR**

Approval ID: LR2002627TA



**BV**

Approval ID: 59146/A0 BV



**VDE Zeichengenehmigung**

Approval ID: 40047798

|  | Nominal voltage $U_N$ | Nominal current $I_N$ | Cross section AWG | Cross section $\text{mm}^2$ |
|--|-----------------------|-----------------------|-------------------|-----------------------------|
|  | 450 V                 | 41 A                  | -                 | -                           |

# PTFIX 6/18X2,5 VT - Distribution block



3273390

<https://www.phoenixcontact.com/gb/products/3273390>

## Classifications

### ECLASS

|             |          |
|-------------|----------|
| ECLASS-11.0 | 27141120 |
| ECLASS-13.0 | 27250118 |

### ETIM

|          |          |
|----------|----------|
| ETIM 9.0 | EC000897 |
|----------|----------|

### UNSPSC

|             |          |
|-------------|----------|
| UNSPSC 21.0 | 39121400 |
|-------------|----------|

# PTFIX 6/18X2,5 VT - Distribution block



3273390

<https://www.phoenixcontact.com/gb/products/3273390>

## Environmental product compliance


|            |   |
|------------|---|
| China RoHS | Environmentally friendly use period: unlimited = EFUP-e |
|            | No hazardous substances above threshold values          |

# PTFIX 6/18X2,5 VT - Distribution block

3273390

<https://www.phoenixcontact.com/gb/products/3273390>

## Accessories

 Note: Applying some accessories below might limit this product.


### FBS 2-5 - Plug-in bridge

3030161

<https://www.phoenixcontact.com/gb/products/3030161>



Plug-in bridge, pitch: 5.2 mm, number of positions: 2, length: 23 mm, color: red

 Max. current carrying capacity: 24 A


### FBS 2-5 GN - Plug-in bridge

3032143

<https://www.phoenixcontact.com/gb/products/3032143>



Plug-in bridge, pitch: 5.2 mm, number of positions: 2, color: green

 Max. current carrying capacity: 24 A

# PTFIX 6/18X2,5 VT - Distribution block

3273390

<https://www.phoenixcontact.com/gb/products/3273390>


## FBS 2-5 BU - Plug-in bridge

3036877

<https://www.phoenixcontact.com/gb/products/3036877>



Plug-in bridge, pitch: 5.2 mm, number of positions: 2, color: blue

 Max. current carrying capacity: 24 A

---

## FBS 2-5 GY - Plug-in bridge

3038969

<https://www.phoenixcontact.com/gb/products/3038969>



Plug-in bridge, pitch: 5.2 mm, number of positions: 2, color: gray

 Max. current carrying capacity: 24 A

# PTFIX 6/18X2,5 VT - Distribution block

3273390

<https://www.phoenixcontact.com/gb/products/3273390>

## PTFIX-NS35 - DIN rail adapter

3274054

<https://www.phoenixcontact.com/gb/products/3274054>

DIN rail adapter, depth: 11 mm, width: 28.6 mm, height: 58.1 mm, color: gray, mounting type: NS 35/7,5



---

## PTFIX-NS35A - DIN rail adapter

3274056

<https://www.phoenixcontact.com/gb/products/3274056>

DIN rail adapter, depth: 11.9 mm, width: 10.3 mm, height: 45.7 mm, color: gray, mounting type: NS 35/7,5



# PTFIX 6/18X2,5 VT - Distribution block

3273390

<https://www.phoenixcontact.com/gb/products/3273390>

## PTFIX-NS35A-FIX - DIN rail adapter

3274057

<https://www.phoenixcontact.com/gb/products/3274057>

DIN rail adapter, with end stop function, depth: 12 mm, width: 10.3 mm, height: 45.7 mm, color: gray, mounting type: NS 35/7,5



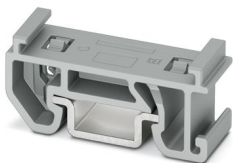
---

## PTFIX-NS15A - DIN rail adapter

3274058

<https://www.phoenixcontact.com/gb/products/3274058>

DIN rail adapter, depth: 10.8 mm, width: 10.3 mm, height: 28.6 mm, color: gray, mounting type: NS 15



# PTFIX 6/18X2,5 VT - Distribution block

3273390

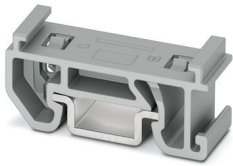
<https://www.phoenixcontact.com/gb/products/3273390>

## PTFIX-NS15A-FIX - DIN rail adapter

3274059

<https://www.phoenixcontact.com/gb/products/3274059>

DIN rail adapter, with end stop function, depth: 10.8 mm, width: 10.3 mm, height: 28.6 mm, color: gray, mounting type: NS 15



---

## PTFIX-F - Flange

3274060

<https://www.phoenixcontact.com/gb/products/3274060>

Flange, with screw-on fixing, depth: 21.7 mm, width: 8.6 mm, height: 28.6 mm, color: gray, mounting type: Screw mounting



# PTFIX 6/18X2,5 VT - Distribution block

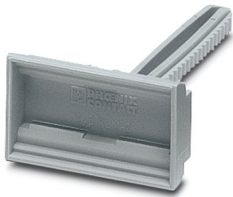
3273390

<https://www.phoenixcontact.com/gb/products/3273390>

## KLM 2 - Terminal strip marker carrier

0807575

<https://www.phoenixcontact.com/gb/products/0807575>



Terminal strip marker carrier, adjustable height, for CLIPFIX 15, CLIPFIX 35, and CLIPFIX 35-5 end brackets, can be marked using snap-in labels

---

## KLM 3-L - Terminal strip marker carrier

0814788

<https://www.phoenixcontact.com/gb/products/0814788>



Terminal strip marker carrier, adjustable height, for CLIPFIX 15, CLIPFIX 35, and CLIPFIX 35-5 end brackets, can be marked using labels in 20 x 8 mm format

# PTFIX 6/18X2,5 VT - Distribution block

3273390

<https://www.phoenixcontact.com/gb/products/3273390>



## MPS-MT 1-S - Test plug

1944372

<https://www.phoenixcontact.com/gb/products/1944372>

Test plug, consisting of 1.0 mm Ø test pin and 2.0 mm Ø socket



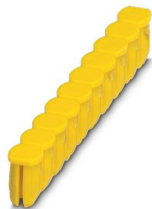
---

## CEC 2,5 - Filler plug

3062757

<https://www.phoenixcontact.com/gb/products/3062757>

Cover for conductor shaft, 10-pos., for spring cage terminal blocks (ST) and terminal blocks with push-in technology (PT) with a width of 5.2 mm



# PTFIX 6/18X2,5 VT - Distribution block



3273390

<https://www.phoenixcontact.com/gb/products/3273390>

## PAI-4-N GY - Test adapter

3032871

<https://www.phoenixcontact.com/gb/products/3032871>



4 mm test adapter, for terminal blocks with 5.2 mm, 6.2 mm and 8.2 mm pitch

---

## MPS-MT - Test plug

0201744

<https://www.phoenixcontact.com/gb/products/0201744>



Test plug, with solder connection up to 1 mm<sup>2</sup> conductor cross section, number of positions: 1, color: gray

# PTFIX 6/18X2,5 VT - Distribution block

3273390

<https://www.phoenixcontact.com/gb/products/3273390>



## MPS-IH WH - Insulating sleeve

0201663

<https://www.phoenixcontact.com/gb/products/0201663>

Insulating sleeve, color: white



---

## MPS-IH RD - Insulating sleeve

0201676

<https://www.phoenixcontact.com/gb/products/0201676>

Insulating sleeve, color: red



# PTFIX 6/18X2,5 VT - Distribution block

3273390

<https://www.phoenixcontact.com/gb/products/3273390>

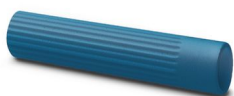


## MPS-IH BU - Insulating sleeve

0201689

<https://www.phoenixcontact.com/gb/products/0201689>

Insulating sleeve, color: blue



---

## MPS-IH YE - Insulating sleeve

0201692

<https://www.phoenixcontact.com/gb/products/0201692>

Insulating sleeve, color: yellow



# PTFIX 6/18X2,5 VT - Distribution block

3273390

<https://www.phoenixcontact.com/gb/products/3273390>



## MPS-IH GN - Insulating sleeve

0201702

<https://www.phoenixcontact.com/gb/products/0201702>

Insulating sleeve, color: green



---

## MPS-IH GY - Insulating sleeve

0201728

<https://www.phoenixcontact.com/gb/products/0201728>

Insulating sleeve, color: gray



# PTFIX 6/18X2,5 VT - Distribution block

3273390

<https://www.phoenixcontact.com/gb/products/3273390>



## MPS-IH BK - Insulating sleeve

0201731

<https://www.phoenixcontact.com/gb/products/0201731>

Insulating sleeve, color: black



---

## ISH 2,5/0,2 - Insulating sleeve

3002843

<https://www.phoenixcontact.com/gb/products/3002843>

Insulating sleeve, color: white



# PTFIX 6/18X2,5 VT - Distribution block



3273390

<https://www.phoenixcontact.com/gb/products/3273390>

## ISH 2,5/0,5 - Insulating sleeve

3002856

<https://www.phoenixcontact.com/gb/products/3002856>



Insulating sleeve, color: gray

---

## ISH 2,5/1,0 - Insulating sleeve

3002869

<https://www.phoenixcontact.com/gb/products/3002869>



Insulating sleeve, color: black

# PTFIX 6/18X2,5 VT - Distribution block

3273390

<https://www.phoenixcontact.com/gb/products/3273390>

## TML (EX3,8)R - Marker strip

0801837

<https://www.phoenixcontact.com/gb/products/0801837>



Marker strip, Roll, white, unlabeled, can be labeled with: THERMOMARK E.300 (D)/600 (D), THERMOMARK ROLL 2.0, THERMOMARK ROLL, THERMOMARK ROLL X1, THERMOMARK ROLLMASTER 300/600, THERMOMARK X1.2, mounting type: adhesive, lettering field size: continuous x 3.8 mm, Number of individual labels: 12

---

## TML (104X3,8)R - Marker strip

0801833

<https://www.phoenixcontact.com/gb/products/0801833>



Marker strip, Roll, white, unlabeled, can be labeled with: THERMOMARK E.300 (D)/600 (D), THERMOMARK ROLL 2.0, THERMOMARK ROLL, THERMOMARK ROLL X1, THERMOMARK ROLLMASTER 300/600, THERMOMARK X1.2, mounting type: adhesive, for terminal block width: 104 mm, lettering field size: 104 x 3.8 mm, Number of individual labels: 2500

# PTFIX 6/18X2,5 VT - Distribution block



3273390

<https://www.phoenixcontact.com/gb/products/3273390>

## TML (104X2,8)R - Marker strip

0801832

<https://www.phoenixcontact.com/gb/products/0801832>



Marker strip, Roll, white, unlabeled, can be labeled with: THERMOMARK E.300 (D)/600 (D), THERMOMARK ROLL 2.0, THERMOMARK ROLL, THERMOMARK ROLL X1, THERMOMARK ROLLMASTER 300/600, THERMOMARK X1.2, mounting type: adhesive, for terminal block width: 104 mm, lettering field size: 104 x 2.8 mm, Number of individual labels: 2500

---

## TML (EX2,8)R - Marker strip

0801836

<https://www.phoenixcontact.com/gb/products/0801836>



Marker strip, Roll, white, unlabeled, can be labeled with: THERMOMARK E.300 (D)/600 (D), THERMOMARK ROLL 2.0, THERMOMARK ROLL, THERMOMARK ROLL X1, THERMOMARK ROLLMASTER 300/600, THERMOMARK X1.2, mounting type: adhesive, for terminal block width: 30000 mm, lettering field size: continuous x 2.8 mm, Number of individual labels: 14

# PTFIX 6/18X2,5 VT - Distribution block



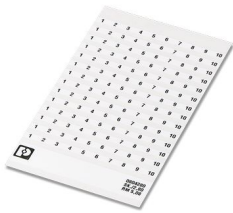
3273390

<https://www.phoenixcontact.com/gb/products/3273390>

## SK 2,8 REEL P5,2 WH CUS - Marker card

8199986

<https://www.phoenixcontact.com/gb/products/8199986>



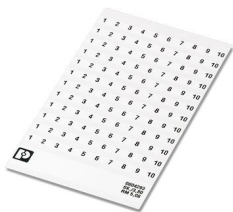
Marker card, can be ordered: by card, white, labeled according to customer specifications, mounting type: adhesive, for terminal block width: 5.2 mm, lettering field size: continuous x 2.8 mm

---

## SK 3,8 REEL P5,2 WH CUS - Marker card

8199989

<https://www.phoenixcontact.com/gb/products/8199989>



Marker card, can be ordered: by card, white, labeled according to customer specifications, mounting type: adhesive, for terminal block width: 5.2 mm, lettering field size: continuous x 3.8 mm

# PTFIX 6/18X2,5 VT - Distribution block



3273390

<https://www.phoenixcontact.com/gb/products/3273390>

## US-TML (104X3,8) - Marker for terminal blocks

0830768

<https://www.phoenixcontact.com/gb/products/0830768>



Marker for terminal blocks, Card, white, unlabeled, can be labeled with: BLUEMARK ID COLOR, BLUEMARK ID, THERMOMARK PRIME, THERMOMARK CARD 2.0, THERMOMARK CARD, mounting type: adhesive, lettering field size: 104 x 3.8 mm, Number of individual labels: 22

---

## US-TML (104X2,8) - Marker for terminal blocks

0830767

<https://www.phoenixcontact.com/gb/products/0830767>



Marker for terminal blocks, Card, white, unlabeled, can be labeled with: BLUEMARK ID COLOR, BLUEMARK ID, THERMOMARK PRIME, THERMOMARK CARD 2.0, THERMOMARK CARD, mounting type: adhesive, lettering field size: 104 x 2.8 mm, Number of individual labels: 26

# PTFIX 6/18X2,5 VT - Distribution block



3273390

<https://www.phoenixcontact.com/gb/products/3273390>

## SK U/3,8 WH:UNBEDRUCKT - Marker card

0803906

<https://www.phoenixcontact.com/gb/products/0803906>



Marker card, Din A4, white, unlabeled, can be labeled with: PLOTMARK, CMS-P1-PLOTTER, Office printing systems, mounting type: adhesive, for terminal block width: 210 mm, lettering field size: 186 x 3.8 mm, Number of individual labels: 1440

---

## SK U/2,8 WH:UNBEDRUCKT - Marker card

0803883

<https://www.phoenixcontact.com/gb/products/0803883>



Marker card, Din A4, white, unlabeled, can be labeled with: PLOTMARK, CMS-P1-PLOTTER, Office printing systems, mounting type: adhesive, for terminal block width: 210 mm, lettering field size: 186 x 2.8 mm, Number of individual labels: 3600

# PTFIX 6/18X2,5 VT - Distribution block

3273390

<https://www.phoenixcontact.com/gb/products/3273390>



## MM-TML (EX3,8)R C1 WH/BK - Label

1092026

<https://www.phoenixcontact.com/gb/products/1092026>



Label, Roll, white/black, unlabeled, can be labeled with: THERMOFOX, THERMOMARK GO, THERMOMARK GO.K, mounting type: adhesive, lettering field size: continuous x 2.8 mm, Number of individual labels: 1

---

## MPS-MT SN - Test plug

3212251

<https://www.phoenixcontact.com/gb/products/3212251>



Test plug, with solder connection up to 1 mm<sup>2</sup> conductor cross section, tin-plated surface, number of positions: 1, color: silver

# PTFIX 6/18X2,5 VT - Distribution block



3273390

<https://www.phoenixcontact.com/gb/products/3273390>

## SZF 1-0,6X3,5 - Screwdriver

1204517

<https://www.phoenixcontact.com/gb/products/1204517>



Actuation tool, for ST terminal blocks, also suitable for use as a bladed screwdriver, size: 0.6 x 3.5 x 100 mm, 2-component grip, with non-slip grip

---

Phoenix Contact 2024 © - all rights reserved

<https://www.phoenixcontact.com>

PHOENIX CONTACT Ltd

Halesfield 13, Telford

Shropshire, TF7 4PG

01952 681700

[info@phoenixcontact.co.uk](mailto:info@phoenixcontact.co.uk)