

HC-M-RJ45-08-GC-F/F - Contact insert module



1419886

<https://www.phoenixcontact.com/gb/products/1419886>

Please be informed that the data shown in this PDF document is generated from our online catalog. Please find the complete data in the user documentation. Our general terms of use for downloads are valid.



Contact insert module, number of positions: RJ45, type : RJ45, Socket, 48 V, 1 A, application: Data, Gender changer

Commercial data

Item number	1419886
Packing unit	1 pc
Minimum order quantity	1 pc
Sales key	BF7ACE
Product key	BF7ACE
Catalog page	Page 591 (C-2-2019)
GTIN	4055626253244
Weight per piece (including packing)	27.1 g
Weight per piece (excluding packing)	27.1 g
Customs tariff number	85366990
Country of origin	PL

HC-M-RJ45-08-GC-F/F - Contact insert module



1419886

<https://www.phoenixcontact.com/gb/products/1419886>

Technical data

Notes

General	Use the patch cable from the accessories list.
General	Connectors may be operated only when there is no load/voltage.

Mounting

Assembly instructions	To ensure correct use, installation in housing with IP54 protection or better is required
-----------------------	---

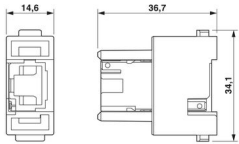
Product properties

Product type	Modular contact insert
Sensor type	Ethernet
Number of positions	8
Connection profile	RJ45
Contact numbering	1 - 8
Application	Data
Number of module slots	1
Type	RJ45
Series	HC-M-RJ45

Insulation characteristics

Overvoltage category	III
Degree of pollution	3

Dimensions

Dimensional drawing	
Width	34.2 mm
Height	36.7 mm
Length	14.6 mm

Mechanical characteristics

Minimum housing height	72 mm
------------------------	-------

Electrical properties

Rated voltage (III/3)	48 V
Rated surge voltage	0.8 kV
Rated current	1 A
Transmission characteristics (category)	CAT6 _A (IEC 60512-27-100:2008, TIA-568-C.2:2009)

Mechanical properties

HC-M-RJ45-08-GC-F/F - Contact insert module



1419886

<https://www.phoenixcontact.com/gb/products/1419886>

Mechanical data

Insertion/withdrawal cycles	≥ 500
-----------------------------	-------

Material specifications

Flammability rating according to UL 94	V0
Contact material	Copper alloy
Contact surface material	Au
Contact carrier material	PC
Standards/regulations	PC: Fire protection in rail vehicles - requirement sets R22, R23, and R24 acc. to DIN EN 45545-2 (Risk level HL1 - HL3)

Environmental and real-life conditions

Ambient conditions

Ambient temperature (operation)	-40 °C ... 70 °C
---------------------------------	------------------

Standards and regulations

Testing

Standards/regulations	PC: Fire protection in rail vehicles - requirement sets R22, R23, and R24 acc. to DIN EN 45545-2 (Risk level HL1 - HL3)
-----------------------	---

HC-M-RJ45-08-GC-F/F - Contact insert module

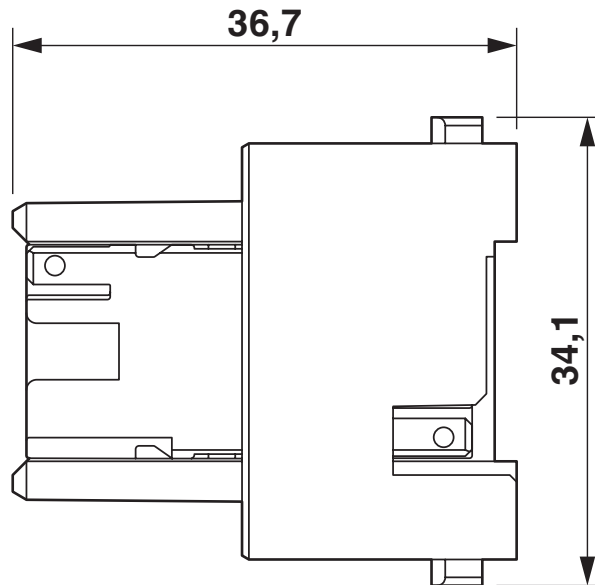
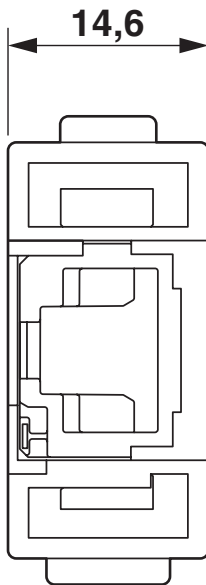


1419886

<https://www.phoenixcontact.com/gb/products/1419886>

Drawings

Dimensional drawing



Female insert

HC-M-RJ45-08-GC-F/F - Contact insert module



1419886

<https://www.phoenixcontact.com/gb/products/1419886>

Approvals

To download certificates, visit the product detail page: <https://www.phoenixcontact.com/gb/products/1419886>

DNV

Approval ID: TAE000037S



CSA

Approval ID: 13631



UL Recognized

Approval ID: E118976



EAC

Approval ID: RU C-DE.BL08.B.00511

HC-M-RJ45-08-GC-F/F - Contact insert module



1419886

<https://www.phoenixcontact.com/gb/products/1419886>

Classifications

ECLASS

ECLASS-11.0	27440218
ECLASS-12.0	27440218
ECLASS-13.0	27440218

ETIM

ETIM 9.0	EC000438
----------	----------

UNSPSC

UNSPSC 21.0	39121400
-------------	----------

HC-M-RJ45-08-GC-F/F - Contact insert module



1419886

<https://www.phoenixcontact.com/gb/products/1419886>

Environmental product compliance

China RoHS	Environmentally friendly use period: unlimited = EFUP-e
	No hazardous substances above threshold values

HC-M-RJ45-08-GC-F/F - Contact insert module

1419886

<https://www.phoenixcontact.com/gb/products/1419886>

Accessories

HC-CBU-MOD - Coding element

1636130

<https://www.phoenixcontact.com/gb/products/1636130>



Coding socket for coding up to 16 connectors, for HC Modular

HC-CST-MOD - Coding element

1636127

<https://www.phoenixcontact.com/gb/products/1636127>



Coding peg for coding up to 16 connectors, for HC Modular

HC-M-RJ45-08-GC-F/F - Contact insert module



1419886

<https://www.phoenixcontact.com/gb/products/1419886>

FL CAT5 PATCH 0,3 - Patch cable

2832250

<https://www.phoenixcontact.com/gb/products/2832250>

Patch cable, CAT5, assembled, 0.3 m



FL CAT5 PATCH 0,5 - Patch cable

2832263

<https://www.phoenixcontact.com/gb/products/2832263>

Patch cable, CAT5, assembled, 0.5 m



HC-M-RJ45-08-GC-F/F - Contact insert module



1419886

<https://www.phoenixcontact.com/gb/products/1419886>

FL CAT5 PATCH 1,0 - Patch cable

2832276

<https://www.phoenixcontact.com/gb/products/2832276>

Patch cable, CAT5, assembled, 1 m



FL CAT5 PATCH 1,5 - Patch cable

2832221

<https://www.phoenixcontact.com/gb/products/2832221>

Patch cable, CAT5, assembled, 1.5 m



HC-M-RJ45-08-GC-F/F - Contact insert module



1419886

<https://www.phoenixcontact.com/gb/products/1419886>

FL CAT5 PATCH 2,0 - Patch cable

2832289

<https://www.phoenixcontact.com/gb/products/2832289>

Patch cable, CAT5, assembled, 2 m



FL CAT5 PATCH 3,0 - Patch cable

2832292

<https://www.phoenixcontact.com/gb/products/2832292>

Patch cable, CAT5, assembled, 3 m



HC-M-RJ45-08-GC-F/F - Contact insert module



1419886

<https://www.phoenixcontact.com/gb/products/1419886>

FL CAT5 PATCH 5,0 - Patch cable

2832580

<https://www.phoenixcontact.com/gb/products/2832580>

Patch cable, CAT5, assembled, 5 m



FL CAT5 PATCH 7,5 - Patch cable

2832616

<https://www.phoenixcontact.com/gb/products/2832616>

Patch cable, CAT5, assembled, 7.5 m



HC-M-RJ45-08-GC-F/F - Contact insert module



1419886

<https://www.phoenixcontact.com/gb/products/1419886>

FL CAT5 PATCH 10,0 - Patch cable

2832629

<https://www.phoenixcontact.com/gb/products/2832629>

Patch cable, CAT5, assembled, 10 m



FL CAT6 PATCH 0,3 - Patch cable

2891181

<https://www.phoenixcontact.com/gb/products/2891181>

Patch cable, CAT6, preassembled, 0.3 m



HC-M-RJ45-08-GC-F/F - Contact insert module



1419886

<https://www.phoenixcontact.com/gb/products/1419886>

FL CAT6 PATCH 0,5 - Patch cable

2891288

<https://www.phoenixcontact.com/gb/products/2891288>

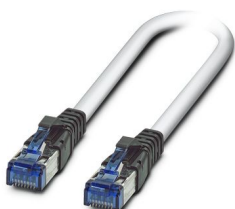


Patch cable, CAT6, preassembled, 0.5 m

FL CAT6 PATCH 1,0 - Patch cable

2891385

<https://www.phoenixcontact.com/gb/products/2891385>



Patch cable, CAT6, preassembled, 1.0 m

HC-M-RJ45-08-GC-F/F - Contact insert module



1419886

<https://www.phoenixcontact.com/gb/products/1419886>

FL CAT6 PATCH 1,5 - Patch cable

2891482

<https://www.phoenixcontact.com/gb/products/2891482>

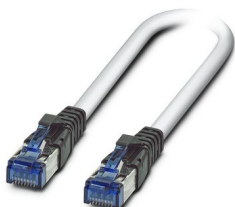


Patch cable, CAT6, preassembled, 1.5 m

FL CAT6 PATCH 2,0 - Patch cable

2891589

<https://www.phoenixcontact.com/gb/products/2891589>



Patch cable, CAT6, preassembled, 2.0 m

HC-M-RJ45-08-GC-F/F - Contact insert module



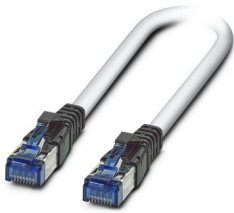
1419886

<https://www.phoenixcontact.com/gb/products/1419886>

FL CAT6 PATCH 3,0 - Patch cable

2891686

<https://www.phoenixcontact.com/gb/products/2891686>



Patch cable, CAT6, preassembled, 3.0 m

FL CAT6 PATCH 5,0 - Patch cable

2891783

<https://www.phoenixcontact.com/gb/products/2891783>



Patch cable, CAT6, preassembled, 5.0 m

HC-M-RJ45-08-GC-F/F - Contact insert module



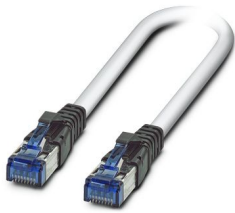
1419886

<https://www.phoenixcontact.com/gb/products/1419886>

FL CAT6 PATCH 7,5 - Patch cable

2891880

<https://www.phoenixcontact.com/gb/products/2891880>



Patch cable, CAT6, preassembled, 7.5 m

FL CAT6 PATCH 10 - Patch cable

2891877

<https://www.phoenixcontact.com/gb/products/2891877>



Patch cable, CAT6, preassembled, 10 m

HC-M-RJ45-08-GC-F/F - Contact insert module



1419886

<https://www.phoenixcontact.com/gb/products/1419886>

FL CAT6 PATCH 12,5 - Patch cable

2891369

<https://www.phoenixcontact.com/gb/products/2891369>

Patch cable, CAT6, preassembled, 12.5 m

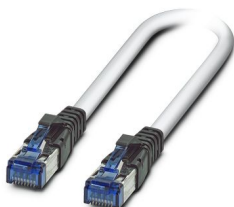


FL CAT6 PATCH 15,0 - Patch cable

2891372

<https://www.phoenixcontact.com/gb/products/2891372>

Patch cable, CAT6, preassembled, 15.0 m



HC-M-RJ45-08-GC-F/F - Contact insert module

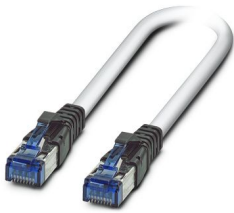
1419886

<https://www.phoenixcontact.com/gb/products/1419886>

FL CAT6 PATCH 20,0 - Patch cable

2891576

<https://www.phoenixcontact.com/gb/products/2891576>

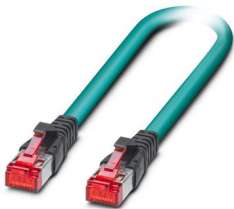


Patch cable, CAT6, preassembled, 20.0 m

NBC-R4AC1/0,3-94G/R4AC1-BU - Patch cable

1413158

<https://www.phoenixcontact.com/gb/products/1413158>



Patch cable, degree of protection: IP20, cable length: 0.3 m, number of positions: 8, 10 Gbps, CAT6_A, connection method: Pierce connection, Ethernet

HC-M-RJ45-08-GC-F/F - Contact insert module



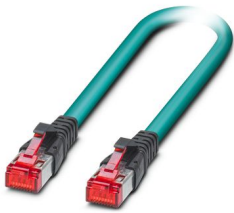
1419886

<https://www.phoenixcontact.com/gb/products/1419886>

NBC-R4AC1/0,5-94G/R4AC1-BU - Patch cable

1413159

<https://www.phoenixcontact.com/gb/products/1413159>

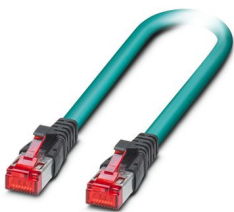


Patch cable, degree of protection: IP20, cable length: 0.5 m, number of positions: 8, 10 Gbps, CAT6_A, Ethernet

NBC-R4AC1/1,0-94G/R4AC1-BU - Patch cable

1413160

<https://www.phoenixcontact.com/gb/products/1413160>



Patch cable, degree of protection: IP20, cable length: 1 m, number of positions: 8, 10 Gbps, CAT6_A, Ethernet

HC-M-RJ45-08-GC-F/F - Contact insert module



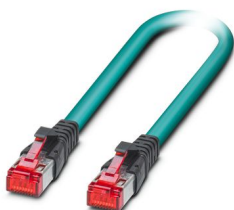
1419886

<https://www.phoenixcontact.com/gb/products/1419886>

NBC-R4AC1/2,0-94G/R4AC1-BU - Patch cable

1413161

<https://www.phoenixcontact.com/gb/products/1413161>

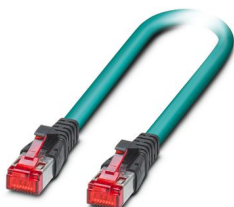


Patch cable, degree of protection: IP20, cable length: 2 m, number of positions: 8, 10 Gbps, CAT6_A, Ethernet

NBC-R4AC1/3,0-94G/R4AC1-BU - Patch cable

1413162

<https://www.phoenixcontact.com/gb/products/1413162>



Patch cable, degree of protection: IP20, cable length: 3 m, number of positions: 8, 10 Gbps, CAT6_A, Ethernet

HC-M-RJ45-08-GC-F/F - Contact insert module



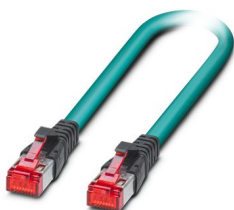
1419886

<https://www.phoenixcontact.com/gb/products/1419886>

NBC-R4AC1/5,0-94G/R4AC1-BU - Patch cable

1413163

<https://www.phoenixcontact.com/gb/products/1413163>

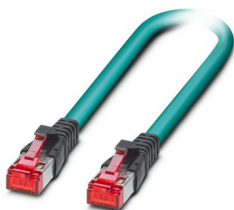


Patch cable, degree of protection: IP20, cable length: 5 m, number of positions: 8, 10 Gbps, CAT6_A, Ethernet

NBC-R4AC1/10,0-94G/R4AC1-BU - Patch cable

1413164

<https://www.phoenixcontact.com/gb/products/1413164>



Patch cable, degree of protection: IP20, cable length: 10 m, number of positions: 8, 10 Gbps, CAT6_A, Ethernet

HC-M-RJ45-08-GC-F/F - Contact insert module



1419886

<https://www.phoenixcontact.com/gb/products/1419886>

NBC-R4AC1/15,0-94G/R4AC1-BU - Patch cable

1413165

<https://www.phoenixcontact.com/gb/products/1413165>

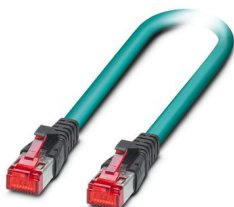


Patch cable, degree of protection: IP20, cable length: 15 m, number of positions: 8, 10 Gbps, CAT6_A, Ethernet

NBC-R4AC1/20,0-94G/R4AC1-BU - Patch cable

1413166

<https://www.phoenixcontact.com/gb/products/1413166>



Patch cable, degree of protection: IP20, cable length: 20 m, number of positions: 8, 10 Gbps, CAT6_A, Ethernet

HC-M-RJ45-08-GC-F/F - Contact insert module



1419886

<https://www.phoenixcontact.com/gb/products/1419886>

NBC-R40C/0,3-BC5/R40C - Patch cable

1227558

<https://www.phoenixcontact.com/gb/products/1227558>



Patch cable, degree of protection: IP20, cable length: 0.3 m, number of positions: 8, CAT5, connection method: Pierce connection, connection cross section: AWG 26- 26, cable outlet: straight, Ethernet

NBC-R40C/0,5-BC5/R40C - Patch cable

1227559

<https://www.phoenixcontact.com/gb/products/1227559>



Patch cable, degree of protection: IP20, cable length: 0.5 m, number of positions: 8, CAT5, connection method: Pierce connection, connection cross section: AWG 26- 26, cable outlet: straight, Ethernet

HC-M-RJ45-08-GC-F/F - Contact insert module



1419886

<https://www.phoenixcontact.com/gb/products/1419886>

NBC-R40C/1,0-BC5/R40C - Patch cable

1227560

<https://www.phoenixcontact.com/gb/products/1227560>



Patch cable, degree of protection: IP20, cable length: 1 m, number of positions: 8, CAT5, connection method: Pierce connection, connection cross section: AWG 26- 26, cable outlet: straight, Ethernet

NBC-R40C/1,5-BC5/R40C - Patch cable

1227561

<https://www.phoenixcontact.com/gb/products/1227561>



Patch cable, degree of protection: IP20, cable length: 1.5 m, number of positions: 8, CAT5, connection method: Pierce connection, connection cross section: AWG 26- 26, cable outlet: straight, Ethernet

HC-M-RJ45-08-GC-F/F - Contact insert module



1419886

<https://www.phoenixcontact.com/gb/products/1419886>

NBC-R4OC/2,0-BC5/R4OC - Patch cable

1227562

<https://www.phoenixcontact.com/gb/products/1227562>



Patch cable, degree of protection: IP20, cable length: 2 m, number of positions: 8, CAT5, connection method: Pierce connection, connection cross section: AWG 26- 26, cable outlet: straight, Ethernet

NBC-R4OC/3,0-BC5/R4OC - Patch cable

1227563

<https://www.phoenixcontact.com/gb/products/1227563>



Patch cable, degree of protection: IP20, cable length: 3 m, number of positions: 8, CAT5, connection method: Pierce connection, connection cross section: AWG 26- 26, cable outlet: straight, Ethernet

HC-M-RJ45-08-GC-F/F - Contact insert module



1419886

<https://www.phoenixcontact.com/gb/products/1419886>

NBC-R4OC/5,0-BC5/R4OC - Patch cable

1227564

<https://www.phoenixcontact.com/gb/products/1227564>



Patch cable, degree of protection: IP20, cable length: 5 m, number of positions: 8, CAT5, connection method: Pierce connection, connection cross section: AWG 26- 26, cable outlet: straight, Ethernet

NBC-R4OC/7,5-BC5/R4OC - Patch cable

1227565

<https://www.phoenixcontact.com/gb/products/1227565>



Patch cable, degree of protection: IP20, cable length: 7.5 m, number of positions: 8, CAT5, connection method: Pierce connection, connection cross section: AWG 26- 26, cable outlet: straight, Ethernet

HC-M-RJ45-08-GC-F/F - Contact insert module



1419886

<https://www.phoenixcontact.com/gb/products/1419886>

NBC-R4OC/10,0-BC5/R4OC - Patch cable

1227566

<https://www.phoenixcontact.com/gb/products/1227566>



Patch cable, degree of protection: IP20, cable length: 10 m, number of positions: 8, CAT5, connection method: Pierce connection, connection cross section: AWG 26- 26, cable outlet: straight, Ethernet

NBC-R4OC/12,5-BC5/R4OC - Patch cable

1227567

<https://www.phoenixcontact.com/gb/products/1227567>



Patch cable, degree of protection: IP20, cable length: 12.5 m, number of positions: 8, CAT5, connection method: Pierce connection, connection cross section: AWG 26- 26, cable outlet: straight, Ethernet

HC-M-RJ45-08-GC-F/F - Contact insert module



1419886

<https://www.phoenixcontact.com/gb/products/1419886>

NBC-R4OC/15,0-BC5/R4OC - Patch cable

1227570

<https://www.phoenixcontact.com/gb/products/1227570>



Patch cable, degree of protection: IP20, cable length: 15 m, number of positions: 8, CAT5, connection method: Pierce connection, connection cross section: AWG 26- 26, cable outlet: straight, Ethernet

NBC-R4OC/20,0-BC5/R4OC - Patch cable

1227571

<https://www.phoenixcontact.com/gb/products/1227571>



Patch cable, degree of protection: IP20, cable length: 20 m, number of positions: 8, CAT5, connection method: Pierce connection, connection cross section: AWG 26- 26, cable outlet: straight, Ethernet

HC-M-RJ45-08-GC-F/F - Contact insert module



1419886

<https://www.phoenixcontact.com/gb/products/1419886>

NBC-R4OC/0,3-BC6A/R4OC - Patch cable

1227572

<https://www.phoenixcontact.com/gb/products/1227572>



Patch cable, degree of protection: IP20, cable length: 0.3 m, number of positions: 8, 10 Gbps, CAT6_A, connection method: Pierce connection, connection cross section: AWG 26- 26, cable outlet: straight, Ethernet

NBC-R4OC/0,5-BC6A/R4OC - Patch cable

1227573

<https://www.phoenixcontact.com/gb/products/1227573>



Patch cable, degree of protection: IP20, cable length: 0.5 m, number of positions: 8, 10 Gbps, CAT6_A, connection method: Pierce connection, connection cross section: AWG 26- 26, cable outlet: straight, Ethernet

HC-M-RJ45-08-GC-F/F - Contact insert module



1419886

<https://www.phoenixcontact.com/gb/products/1419886>

NBC-R4OC/1,0-BC6A/R4OC - Patch cable

1227575

<https://www.phoenixcontact.com/gb/products/1227575>



Patch cable, degree of protection: IP20, cable length: 1 m, number of positions: 8, 10 Gbps, CAT6_A, connection method: Pierce connection, connection cross section: AWG 26- 26, cable outlet: straight, Ethernet

NBC-R4OC/1,5-BC6A/R4OC - Patch cable

1227578

<https://www.phoenixcontact.com/gb/products/1227578>



Patch cable, degree of protection: IP20, cable length: 1.5 m, number of positions: 8, 10 Gbps, CAT6_A, connection method: Pierce connection, connection cross section: AWG 26- 26, cable outlet: straight, Ethernet

HC-M-RJ45-08-GC-F/F - Contact insert module



1419886

<https://www.phoenixcontact.com/gb/products/1419886>

NBC-R4OC/2,0-BC6A/R4OC - Patch cable

1227580

<https://www.phoenixcontact.com/gb/products/1227580>



Patch cable, degree of protection: IP20, cable length: 2 m, number of positions: 8, 10 Gbps, CAT6_A, connection method: Pierce connection, connection cross section: AWG 26- 26, cable outlet: straight, Ethernet

NBC-R4OC/3,0-BC6A/R4OC - Patch cable

1227581

<https://www.phoenixcontact.com/gb/products/1227581>



Patch cable, degree of protection: IP20, cable length: 3 m, number of positions: 8, 10 Gbps, CAT6_A, connection method: Pierce connection, connection cross section: AWG 26- 26, cable outlet: straight, Ethernet

HC-M-RJ45-08-GC-F/F - Contact insert module

1419886

<https://www.phoenixcontact.com/gb/products/1419886>

NBC-R4OC/5,0-BC6A/R4OC - Patch cable

1227583

<https://www.phoenixcontact.com/gb/products/1227583>



Patch cable, degree of protection: IP20, cable length: 5 m, number of positions: 8, 10 Gbps, CAT6_A, connection method: Pierce connection, connection cross section: AWG 26- 26, cable outlet: straight, Ethernet

NBC-R4OC/7,5-BC6A/R4OC - Patch cable

1227585

<https://www.phoenixcontact.com/gb/products/1227585>



Patch cable, degree of protection: IP20, cable length: 7.5 m, number of positions: 8, 10 Gbps, CAT6_A, connection method: Pierce connection, connection cross section: AWG 26- 26, cable outlet: straight, Ethernet

HC-M-RJ45-08-GC-F/F - Contact insert module



1419886

<https://www.phoenixcontact.com/gb/products/1419886>

NBC-R4OC/10,0-BC6A/R4OC - Patch cable

1227588

<https://www.phoenixcontact.com/gb/products/1227588>



Patch cable, degree of protection: IP20, cable length: 10 m, number of positions: 8, 10 Gbps, CAT6_A, connection method: Pierce connection, connection cross section: AWG 26- 26, cable outlet: straight, Ethernet

NBC-R4OC/12,5-BC6A/R4OC - Patch cable

1227590

<https://www.phoenixcontact.com/gb/products/1227590>



Patch cable, degree of protection: IP20, cable length: 12.5 m, number of positions: 8, 10 Gbps, CAT6_A, connection method: Pierce connection, connection cross section: AWG 26- 26, cable outlet: straight, Ethernet

HC-M-RJ45-08-GC-F/F - Contact insert module



1419886

<https://www.phoenixcontact.com/gb/products/1419886>

NBC-R4OC/15,0-BC6A/R4OC - Patch cable

1227591

<https://www.phoenixcontact.com/gb/products/1227591>



Patch cable, degree of protection: IP20, cable length: 15 m, number of positions: 8, 10 Gbps, CAT6_A, connection method: Pierce connection, connection cross section: AWG 26- 26, cable outlet: straight, Ethernet

NBC-R4OC/20,0-BC6A/R4OC - Patch cable

1227593

<https://www.phoenixcontact.com/gb/products/1227593>



Patch cable, degree of protection: IP20, cable length: 20 m, number of positions: 8, 10 Gbps, CAT6_A, connection method: Pierce connection, connection cross section: AWG 26- 26, cable outlet: straight, Ethernet

HC-M-RJ45-08-GC-F/F - Contact insert module

1419886

<https://www.phoenixcontact.com/gb/products/1419886>

HC-M-B06-MFH-B - Module carrier frame

1182085

<https://www.phoenixcontact.com/gb/products/1182085>

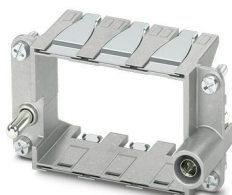


Module carrier frame, size: B6, type : for the panel mounting side (a, b, c, ...), 4 mm² ... 6 mm², application: Module carrier frame

HC-M-B10-MFH-B - Module carrier frame

1182088

<https://www.phoenixcontact.com/gb/products/1182088>



Module carrier frame, size: B10, type : for the panel mounting side (a, b, c, ...), 4 mm² ... 6 mm², application: Module carrier frame

HC-M-RJ45-08-GC-F/F - Contact insert module

1419886

<https://www.phoenixcontact.com/gb/products/1419886>

HC-M-B16-MFH-B - Module carrier frame

1182090

<https://www.phoenixcontact.com/gb/products/1182090>

Module carrier frame, size: B16, type : for the panel mounting side (a, b, c, ...), 4 mm² ... 6 mm², application: Module carrier frame



HC-M-B24-MFH-B - Module carrier frame

1182094

<https://www.phoenixcontact.com/gb/products/1182094>

Module carrier frame, size: B24, type : for the panel mounting side (a, b, c, ...), 4 mm² ... 6 mm², application: Module carrier frame



HC-M-RJ45-08-GC-F/F - Contact insert module

1419886

<https://www.phoenixcontact.com/gb/products/1419886>

HC-M-B06-MFH-H - Module carrier frame

1182087

<https://www.phoenixcontact.com/gb/products/1182087>



Module carrier frame, size: B6, type : for the sleeve side (A, B, C, ...), 4 mm² ... 6 mm², application: Module carrier frame

HC-M-B10-MFH-H - Module carrier frame

1182089

<https://www.phoenixcontact.com/gb/products/1182089>



Module carrier frame, size: B10, type : for the sleeve side (A, B, C, ...), 4 mm² ... 6 mm², application: Module carrier frame

HC-M-RJ45-08-GC-F/F - Contact insert module

1419886

<https://www.phoenixcontact.com/gb/products/1419886>

HC-M-B16-MFH-H - Module carrier frame

1182093

<https://www.phoenixcontact.com/gb/products/1182093>

Module carrier frame, size: B16, type : for the sleeve side (A, B, C, ...), 4 mm² ...
6 mm², application: Module carrier frame



HC-M-B24-MFH-H - Module carrier frame

1182095

<https://www.phoenixcontact.com/gb/products/1182095>

Module carrier frame, size: B24, type : for the sleeve side (A, B, C, ...), 4 mm² ...
6 mm², application: Module carrier frame



HC-M-RJ45-08-GC-F/F - Contact insert module



1419886

<https://www.phoenixcontact.com/gb/products/1419886>

HC-M-RJ45-AD-PC-M - Contact insert module

1419885

<https://www.phoenixcontact.com/gb/products/1419885>

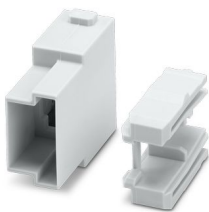


Contact insert module, adapter for patch cables, the matching patch cables can be found in the accessories list

HC-M-RJ45-AD-PC2-M - Contact insert module

1435214

<https://www.phoenixcontact.com/gb/products/1435214>



Contact insert module, adapter for patch cables, the matching patch cables can be found in the accessories list

Phoenix Contact 2024 © - all rights reserved
<https://www.phoenixcontact.com>

PHOENIX CONTACT Ltd
Halesfield 13, Telford
Shropshire, TF7 4PG
01952 681700
info@phoenixcontact.co.uk