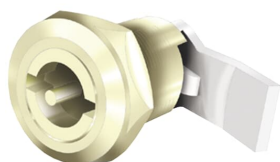

PRODUCT-DETAILS

4331.0595.0

SDC-LD Lock



General Information

Global Commercial Alias	4331.0595.0
Extended Product Type	SDC-LD
Product ID	2CGX043310595
EAN	7331980006304
Catalog Description	SDC-LD Lock
Long Description	DIN lock for SDC/SDCM

Circular Value

Conflict Minerals Reporting Template (CMRT)	9AKK108467A5658
REACH Declaration	2CGC0049

Ordering

Minimum Order Quantity	1 piece
Customs Tariff Number	85389099
Country of Origin	Sweden (SE)

Popular Downloads

Data Sheet, Technical Information	2CGC0036
Instructions and Manuals	No Instructions and Manuals needed

Dimensions

Product Net Width	55 mm
Product Net Height	30 mm
Product Net Depth / Length	40 mm
Product Net Weight	0.1 kg

Technical

Handle Type	Key
Lock Type	DIN lock

Certificates and Declarations

Declaration of Conformity - CE	No declaration needed
REACH Declaration	2CGC0049

Container Information

Package Level 1 Units	bag 1 piece
Package Level 1 Width	55 mm
Package Level 1 Depth / Length	30 mm
Package Level 1 Height	40 mm
Package Level 1 Gross Weight	0.1 kg
Package Level 1 EAN	733198006304

Classifications

ETIM 7	EC000327 - Lock system for switchgear cabinet systems
ETIM 8	EC000327 - Lock system for enclosure/cabinet
ETIM 9	EC000327 - Lock system for enclosure/cabinet
eClass	V11.1 : 27400641
WEEE Category	Product Not in WEEE Scope
E-Number (Finland)	5451430
E-Number (Sweden)	1646796

Categories

Low Voltage Products and Systems → Cable Distribution Cabinets → Kabeldon Cable Distribution Cabinets → Cable Distribution Cabinets Accessories

