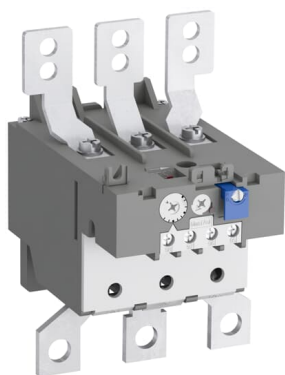


PRODUCT-DETAILS

# TA200DU-200

## TA200DU-200 Thermal Overload Relay 150 ... 200 A



### General Information

|                       |  |
|-----------------------|--|
| Extended Product Type | TA200DU-200  |
| Product ID            | 1SAZ421201R1006  |
| EAN                   | 4013614286063  |
| Catalog Description   | TA200DU-200 Thermal Overload Relay 150 ... 200 A   |
| Long Description      | The TA200DU-200 thermal overload relay is an economic electromechanical protection device for the main circuit. It offers reliable and fast protection for motors in the event of overload or phase failure. The device has trip class 10A. Further features are the temperature compensation, trip contact (NC), signal contact (NO), automatic- or manual reset selectable, trip-free mechanism, STOP- and Test function and a trip indication. The overload relays are connected directly to the block contactors. Single mounting kits are available as accessory. |

### Ordering

|                        |          |
|------------------------|----------|
| Minimum Order Quantity | 1 piece  |
| Customs Tariff Number  | 85364900 |

### Popular Downloads

|                                   |                 |
|-----------------------------------|-----------------|
| Data Sheet, Technical Information | 1SBC100214C0202 |
| Instructions and Manuals          | 2CDC106028M6802 |
| Instructions and Manuals (Part 2) | 1SAC200017M0002 |

|                                      |                        |
|--------------------------------------|------------------------|
| Time-Current<br>Characteristic Curve | 1SAZ400502F0006        |
| CAD Dimensional<br>Drawing           | 2CDC001079B0201        |
| <u>Dimension Diagram</u>             | <u>1SAZ400401F0001</u> |

## Dimensions

|                               |          |
|-------------------------------|----------|
| Product Net Width             | 104 mm   |
| Product Net Height            | 151 mm   |
| Product Net Depth /<br>Length | 126 mm   |
| Product Net Weight            | 0.785 kg |

## Technical

|   |  |
|---|--|
| Setting Range   | 150 ... 200 A  |
| Rated Operational Voltage                             | Auxiliary Circuit 440 V DC<br>Auxiliary Circuit 500 V AC<br>Main Circuit 690 V AC<br>Main Circuit 440 V DC   |
| Rated Operational Current<br>( $I_e$ )                | 200 A  |
| Rated Frequency (f)                                   | Auxiliary Circuit 50 Hz<br>Auxiliary Circuit 60 Hz<br>Auxiliary Circuit DC<br>Main Circuit 60 Hz<br>Main Circuit 50 Hz<br>Main Circuit DC  |
| Rated Impulse Withstand<br>Voltage ( $U_{imp}$ )      | Auxiliary Circuit 6 kV<br>Main Circuit 6 kV  |
| Rated Insulation Voltage<br>( $U_i$ )                 | 690 V  |
| Number of Poles                                       | 3  |
| Number of Auxiliary<br>Contacts NC                    | 1  |
| Number of Auxiliary<br>Contacts NO                    | 1  |
| Number of Protected<br>Poles                          | 3  |
| Conventional Free-air<br>Thermal Current ( $I_{th}$ ) | Auxiliary Circuit NC 5 A<br>Auxiliary Circuit NO 5 A   |
| Rated Operational Current<br>AC-15 ( $I_e$ )          | (120 V) NC 3 A<br>(120 V) NO 1.5 A<br>(240 V) NC 3 A<br>(240 V) NO 1.5 A<br>(400 V) NC 1.9 A<br>(400 V) NO 1 A<br>(440 V) NC 1 A<br>(440 V) NO 1 A<br>(500 V) NC 1 A<br>(500 V) NO 1 A |
| Rated Operational Current<br>DC-13 ( $I_e$ )          | (125 V) NC 0.25 A<br>(125 V) NO 0.25 A<br>(24 V) NC 1.25 A<br>(24 V) NO 1.25 A<br>(250 V) NC 0.12 A<br>(250 V) NO 0.04 A<br>(60 V) NC 0.25 A<br>(60 V) NO 0.25 A                       |
| Degree of Protection                                  | Housing IP20<br>Main Circuit Terminals IP00  |
| Pollution Degree                                      | 3  |
| Connecting Capacity<br>Auxiliary Circuit              | Flexible with Ferrule 1/2x 0.75 ... 2.5 mm <sup>2</sup><br>Flexible 1/2x 0.75 ... 2.5 mm <sup>2</sup><br>Rigid 1/2x 0.75 ... 4 mm <sup>2</sup>   |
| Connecting Capacity Main                              | Hole Diameter > 10 mm <sup>2</sup>   |

|                          |  |
|--------------------------|--|
| Circuit                  | Rigid or Flexible with Cable Lug 1x 25 ... 120 mm <sup>2</sup>                       |
| Tightening Torque        | Auxiliary Circuit 1 ... 1.3 N·m<br>Main Circuit 25 N·m                               |
| Wire Stripping Length    | Auxiliary Circuit 9 mm   |
| Recommended Screw Driver | Auxiliary Circuit Pozidriv 1<br>Main Circuit Open Bars                               |
| Mounting Position        | 1 ... 6  |
| Power Loss               | at Rated Operating Conditions per Pole 4.3 ... 7.7 W                                 |
| Suitable For             | A145<br>A185<br>AF145<br>AF185<br>AF190<br>AF205                                     |
| Standards                | IEC/EN 60947-1<br>IEC/EN 60947-4-1<br>IEC/EN 60947-5-1<br>UL 60947-1<br>UL 60947-4-1 |

### Technical UL/CSA

|  |  |
|--|--|
| Maximum Operating Voltage UL/CSA             | Main Circuit 600 V AC                                |
| Contact Rating UL/CSA                        | (NO:) B600<br>(NO:) C600                             |
| Connecting Capacity Main Circuit UL/CSA      | Flexible 1x 4-0000 AWG<br>Stranded 1x 4-0000 AWG     |
| Connecting Capacity Auxiliary Circuit UL/CSA | Flexible 1/2x 18-14 AWG<br>Stranded 1/2x 18-14 AWG   |
| Tightening Torque UL/CSA                     | Auxiliary Circuit 12 in·lb<br>Main Circuit 220 in·lb |

### Environmental

|  |  |
|--|--|
| Ambient Air Temperature                    | Operation -25 ... +55 °C<br>Operation Compensated -25 ... +55 °C<br>Storage -40 ... +70 °C |
| Ambient Air Temperature Compensation       | Yes  |
| Maximum Operating Altitude Permissible     | 2000 m   |
| Resistance to Shock acc. to IEC 60068-2-27 | 11 ms Pulse 12g  |
| RoHS Status                                | Following EU Directive 2011/65/EU and Amendment 2015/863 July 22, 2019                     |

### Eco Transparency

|                           |                 |
|---------------------------|-----------------|
| Environmental Information | 1SAC200056H0009 |
|---------------------------|-----------------|

### Certificates and Declarations

|                                  |                     |
|----------------------------------|---------------------|
| ABS Certificate                  | 1SAA941000-0102     |
| BV Certificate                   | 1SAA941000-0201     |
| CB Certificate                   | 1SAA941004-2003     |
| CQC Certificate                  | CQC2016010309922936 |
| Declaration of Conformity - CCC  | 2020980304001321    |
| Declaration of Conformity - CE   | 1SAD101100-3509     |
| Declaration of Conformity - UKCA | 1SAD201100-3509     |

|                    |                 |
|--------------------|-----------------|
| DNV Certificate    | 1SAA941000-0304 |
| DNV GL Certificate | 1SAA941000-0304 |
| EAC Certificate    | 1SAA941002-2702 |
| GL Certificate     | 1SAA941000-0304 |
| LR Certificate     | 1SAA941000-0504 |
| RMRS Certificate   | 1SAA941000-0704 |
| UL Certificate     | E48139-19910930 |

## Container Information

|                                |               |
|--------------------------------|---------------|
| Package Level 1 Units          | 1 piece       |
| Package Level 1 Width          | 165 mm        |
| Package Level 1 Height         | 133 mm        |
| Package Level 1 Depth / Length | 151 mm        |
| Package Level 1 Gross Weight   | 1.035 kg      |
| Package Level 1 EAN            | 4013614286063 |
| Package Level 2 Units          | 4 piece       |
| Package Level 2 Width          | 280 mm        |
| Package Level 2 Height         | 210 mm        |
| Package Level 2 Depth / Length | 395 mm        |
| Package Level 2 Gross Weight   | 8.786 kg      |
| Package Level 2 EAN            | 4013614494284 |

## Classifications

|                                    |                                   |
|------------------------------------|-----------------------------------|
| Object Classification Code         | F                                 |
| ETIM 4                             | EC000106 - Thermal overload relay |
| ETIM 5                             | EC000106 - Thermal overload relay |
| ETIM 6                             | EC000106 - Thermal overload relay |
| ETIM 7                             | EC000106 - Thermal overload relay |
| ETIM 8                             | EC000106 - Thermal overload relay |
| eClass                             | V11.0 : 27371501                  |
| UNSPSC                             | 39122330                          |
| IDEA Granular Category Code (IGCC) | 5366 >> Thermal overload relay    |
| E-Number (Finland)                 | 3709362                           |
| E-Number (Sweden)                  | 3228710                           |

## Accessories

| Identifier      | Description                 | Type      | Quantity | Unit Of Measure |
|-----------------|-----------------------------|-----------|----------|-----------------|
| 1SAZ401110R0001 | DB200 Single Mounting Kit   | DB200     | 1        | piece           |
| 1SAZ401901R1001 | LT200/A Terminal Shroud     | LT200/A   | 1        | piece           |
| 1SFA616162R1014 | KPR3-101L Reset push button | KPR3-101L | 1        | piece           |

---

## Categories

---

Low Voltage Products and Systems → Control Products → Contactors → Thermal Overload Relays

