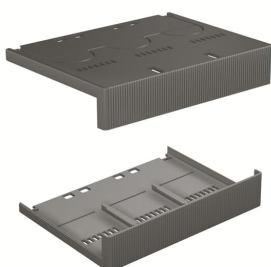


PRODUCT-DETAILS

LTC T4 3p TERMINAL COVERS LOW 2pcs

LTC T4 3p TERMINAL COVERS LOW 2pcs



General Information

Extended Product Type	LTC T4 3p TERMINAL COVERS LOW 2pcs
Product ID	1SDA054966R1
EAN	8015644561055
Catalog Description	LTC T4 3p TERMINAL COVERS LOW 2pcs
Long Description	LOW TERMINAL-COVERS THREE-POLE 2pcs T4

Circular Value

Conflict Minerals Reporting Template (CMRT)	9AKK108467A5658
Toxic Substances Control Act - TSCA	9AKK108467A8326

Environmental

Environmental Information	9AKK108467A6707
REACH Declaration	9AKK108466A1425
RoHS Information	9AKK108466A1424
RoHS Status	Following EU Directive 2011/65/EU and Amendment 2015/863 July 22, 2019

Ordering

Order Code US and	KT4LTC-3
-------------------	----------

Canada	
E-Number (Finland)	3655712
EAN	8015644561055
Minimum Order Quantity	1 piece
Customs Tariff Number	85389099

Dimensions

Product Net Weight	0.048 kg
--------------------	----------

Container Information

Package Level 1 Units	1 piece
Package Level 1 Width	150 mm
Package Level 1 Height	30 mm
Package Level 1 Depth / Length	180 mm
Package Level 1 Gross Weight	0.051 kg
Package Level 1 EAN	8015644561055

Additional Information

Configuration Type	Loose or configurable
Number of Poles	3
Product Main Type	Accessories for Tmax T
Product Name	Accessory
Product Type	Accessory
Standards	IEC
Suitable For	T4
Suitable for Product Class	SACE Tmax T

Certificates and Declarations

Data Sheet, Technical Information	1SDC210015D0208 1SDC210300D0201
Declaration of Conformity - CE	Refer to the EU Declaration of the relative Circuit Breaker
Instructions and Manuals	1SDH000436R0643

Classifications

ETIM 7	EC002268 - Cover cap for rail terminal bar
ETIM 8	EC002268 - Cover cap for rail terminal bar
ETIM 9	EC002268 - Cover cap for rail terminal bar
Object Classification Code	Q
UNSPSC	39121410
WEEE Category	5. Small Equipment (No External Dimension More Than 50 cm)
eClass	V11.1 : 27400635

Categories

Low Voltage Products and Systems → Circuit Breakers → Moulded Case Circuit Breakers → Accessories for Tmax T

