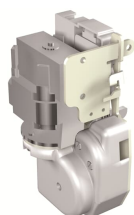


PRODUCT-DETAILS

M XT7M 220-250 V AC/DC

M XT7M 220-250 V AC/DC



General Information

Extended Product Type	M XT7M 220-250 V AC/DC
Product ID	1SDA104922R1
EAN	8015644070144
Catalog Description	M XT7M 220-250 V AC/DC
Long Description	GEARED MOTOR DEVICE 220..250V AC-DC XT7M

Circular Value

Conflict Minerals Reporting Template (CMRT)	9AKK108467A5658
Toxic Substances Control Act - TSCA	9AKK108467A8326

Environmental

Environmental Information	9AKK108467A6707
REACH Declaration	9AKK108466A1425
RoHS Information	9AKK108466A1424
RoHS Status	Following EU Directive 2011/65/EU and Amendment 2015/863 July 22, 2019

Ordering

Order Code US and Canada	KXTMSCM220-250
EAN	8015644070144
Minimum Order Quantity	1 piece
Customs Tariff Number	85389099

Dimensions

Product Net Weight	2.2 kg
--------------------	--------

Container Information

Package Level 1 Units	box 1 piece
Package Level 1 Width	130 mm
Package Level 1 Height	80 mm
Package Level 1 Depth / Length	200 mm
Package Level 1 Gross Weight	2.3 kg
Package Level 1 EAN	8015644070144

Additional Information

Configuration Type	Loose or configurable
Current Type	AC/DC
Order Multiple	1 piece
Product Main Type	Accessories for Tmax XT
Product Name	Accessory
Product Type	Accessory
Rated Voltage (U _r)	220...250 V AC 220...250 V DC
Standards	IEC UL
Suitable For	XT7M
Suitable for Product Class	SACE Tmax XT

Certificates and Declarations

Data Sheet, Technical Information	1SDC210100D0206 1SDC210099D0206
Declaration of Conformity - CE	Refer to the EU Declaration of the relative Circuit Breaker
Instructions and Manuals	1SDH002013A1603

Classifications

ETIM 7	EC001030 - Motor operator for power circuit-breaker
ETIM 8	EC001030 - Motor operator for power circuit-breaker
ETIM 9	EC001030 - Motor operator for power circuit-breaker
IDEA Granular Category Code (IGCC)	4872 >> Motor operator for power circuit-breaker

UNSPSC	39121601
WEEE Category	5. Small Equipment (No External Dimension More Than 50 cm)
eClass	V11.1 : 27370412

Categories

Low Voltage Products and Systems → Circuit Breakers → Moulded Case Circuit Breakers → Accessories for Tmax XT

