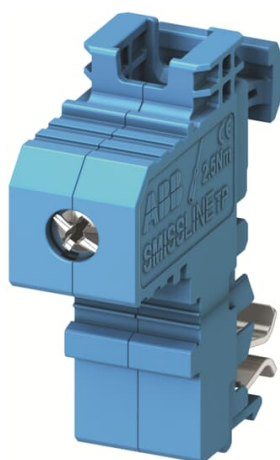


PRODUCT-DETAILS

ZLS913

ZLS913 Terminal



General Information

Extended Product Type	ZLS913
Product ID	2CCA183470R0001
EAN	7612271421304
Catalog Description	ZLS913 Terminal
Long Description	N terminal for additional socket SMISLINE TP, for external busbars 16 mm ² up to 35 mm ² wire with ferrule, max. 1 wire

Technical

Standards	IEC/EN 61439-6
Rated Operational Voltage	690 V AC 1000 V DC
Rated Current (I _n)	100 A
Surface Finishing	Tinned
Model Number	Flat

Environmental

RoHS Status	Following EU Directive 2011/65/EU and Amendment 2015/863 July 22, 2019
Environmental Information	9AKK108467A9561

Dimensions

Product Net Width	35 mm
Product Net Height	46 mm
Product Net Depth / Length	47 mm
Product Net Weight	30 g

Container Information

Package Level 1 Units	carton 1 piece
Package Level 1 Width	35 mm
Package Level 1 Height	46 mm
Package Level 1 Depth / Length	47 mm
Package Level 1 Gross Weight	36 g
Package Level 1 EAN	7612271421304

Ordering

Minimum Order Quantity	1 piece
Customs Tariff Number	85389040
E-Number (Sweden)	2100083
E-Number (Switzerland)	809997275
Country of Origin	Bulgaria (BG)

Certificates and Declarations (Document Number)

Declaration of Conformity - CE	9AKK107991A9646
Environmental Information	9AKK108467A9561
Instructions and Manuals	9AKK107680A2315
RoHS Information	9AKK107991A9646

Popular Downloads

Data Sheet, Technical Information	9AKK107492A6192
Instructions and Manuals	9AKK107680A2315
Dimension Diagram	9AKK107492A6192

Classifications

ETIM 7	EC001522 - Busbar
ETIM 8	EC001522 - Busbar
EPLAN Catalog Tree	Electrical engineering / Protection devices / General
WEEE Category	5. Small Equipment (No External Dimension More Than 50 cm)
WEEE B2C / B2B	Business To Business
CN8	85389040
eClass	V11.0 : 27370303
Object Classification Code	W

Categories

Low Voltage Products and Systems → Modular DIN Rail Products → Plug-in Distribution Systems → Plug-in Distribution Systems
Accessories → Incoming Blocks and Terminals, Loose Accessories

