

MAGNUM FUTURE



MAGNUM FUTURE

A modern fitting ensuring professional lighting of your work place. Designed by the constructors having several decades of experience, it combines modern, most efficient LED solutions with necessary functionality of work lamps.



- + modern + energy saving + light and easy to transport
- + resistant to impact and unfavourable weather conditions
- + equipped with practical solutions designed for the sake of your comfort
- + reserved in the Office for Harmonisation in the Internal Market (OHIM)





MODERN OPTICS

MODERN OPTICAL SYSTEM - UNIQUE CONSTRUCTION OF THE DIFFUSER

Diffuser is made of new generation polycarbonate developed by Bayer Material Science and dedicated for LED lighting. This material guarantees maximum transmission of the visible spectrum (93%) and near infrared waves up to 1100 nm. The diffuser is resistant to wide range of operating temperatures and its transparency remains intact within temperatures from -30°C to $+80^{\circ}\text{C}$. The material is characterized by very high mechanical resistance to impacts which of course extends the lifetime of the lamp. By using frozen diffuser, the designers have minimized the glare factor, thus significantly improving comfort of working with MAGNUM FUTURE.



MODERN OPTICAL SYSTEM - DIODES DIFFERENT FROM ALL THE OTHERS

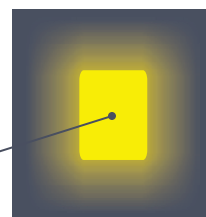
Super efficient SMD LED diodes ensure comfortable lighting of the work place. Wide angle of light distribution (120°) makes it easier to move around the illuminated area without taking the lamp from one place to another. A favourable colour rendering index $\text{CRI} > 80$ significantly improves the comfort of work.



ENERGY EFFICIENCY

SAVING ENERGY, SAVING MONEY

Modern SMD LED 5730 diodes, made in accordance to a super effective technology, ensure maximum luminous flux at minimum power consumption. Thanks to exceptional efficacy of the SMD diodes with the power of 32W, the fitting generates the luminous flux of 2950 lm, which is 25% stronger than in case of comparable 72W fluorescent fittings or 300W metal halide fittings.



90lm/W



MAXIMUM RESISTANCE

IMPACT AND WEATHER RESISTANCE

Ribbed housing made of highly resistant copolymer of polypropylene ensures special resilience to falls and other mechanical damages IK10 that often appear in the workplace. This unique combination of modern construction and material, perfectly protects the optical system and guarantees right level of amortisation. Even after falling onto hard concrete surface from a height, the fitting it still working and it's not necessary to change the light sources. High ingress protection of the whole construction (IP54*) protects against dust and rain falling at any angle.



IMPACT RESISTANCE





EASY TO HANDLE

Innovative construction of MAGNUM FUTURE brings many benefits for the user. Strong copolymer of polypropylene is a great alternative to expensive and heavy aluminium, traditionally applied in this type of fittings. What more, the ribbing makes the fitting capable of performing a radiator function, so you can touch the operating fitting with your hand any time.



SMART DESIGN - MULTIPOSITIONAL ARM

MAGNUM FUTURE has been designed with a great concern for the needs of the end-user. Multi-positional arm makes it easier to set the fitting at any angle and special lock enables to keep the given angle during the whole time of work.



ERGONOMICS HOOKS

The fitting is equipped with ergonomic handles/hooks for wire winding which make the transport easier.



VERY LIGHT CONSTRUCTION

Magnum Future weighs only 2.8 kg. Thanks to comfortable handle it can be easily carried from one place of work to another.

EXTRAS

USEFUL SOLUTIONS

Magnum Future can be used as an extension cord. With two sockets, it's possible to connect other electrical tools. What more, it's possible to connect 16 lamps together and illuminate big spaces.



MICROWAVE MOTION
DETECTOR

MICROWAVE MOTION SENSOR

Microwave motion sensor (RCR) will automatically turn on and turn off the lamp under the influence of the movement. The detection range of the sensor is 8 meters. This function saves energy and eliminates the need to manually turn on/off the lamp.



EFFICIENT AND MODERN BATTERIES

Rechargeable batteries enable the user to use the lamp without power connection.

BACKLIGHT

With backlight on, you can find the lamp in the dark. Backlight can be also used for illuminating the tools at the back.



ACCESORIES

WIDE RANGE OF ACCESSORIES

Users can take full advantage of Magnum Future benefits, with a wide range of accessories which enable to mount and apply the fitting at work places with a various level of accessibility.



- 016707 Small tripod**
- Tripod for mounting 1 fitting
 - Made of galvanised steel
 - Maximum height: 250 cm
 - Hook for cable winding
 - 2 pcs of M6 screws for fitting mounting included



- 016950 Tripod 250 cm**
- Made of galvanised steel
 - Maximum height: 250 cm
 - Hook for cable winding
 - 4 pcs of screws for both fittings mounting included



- 016660 Large tripod**
- Tripod for mounting 1 fitting
 - Made of galvanised steel
 - Maximum height: 250 cm; Hook for cable winding
 - Available set of wheels to the tripod
 - 2 pcs of M6 screws for fitting mounting included



- 000454 Steel tripod**
- Tripod for mounting 1 fitting
 - Made of powder coated steel
 - Maximum height: 250 cm
 - Hook for cable winding

016684



- 016684 Set of wheels for large tripod**
- Set of 3 wheels for large tripod (016660)
 - One of the wheels equipped with brake

314094



- 314094 Wall holder**
- Steel wall holder
 - 2 pcs of M6 screws for fitting mounting included
 - 4 wall plugs included

016639



- 016639 Crossbar for the tripod**
- Steel crossbar for mounting 2 fittings onto the tripod
 - Used with large tripod (016660), small tripod (016707) and steel tripod (000454)
 - Screws for mounting not included

314100



- 314100 Scaffolding holder**
- Steel holder for mounting the fitting onto the scaffolding
 - Adjustable clamp for scaffolding mounting
 - 2 pcs of M6 screws for fitting mounting included

314087



- 314087 Magnet holder**
- Magnet holder for the floodlights
 - 6 very strong magnets
 - 2 pcs of M6 screws for fitting mounting included

016639



- 314063 Universal holder**
- Universal holder for the floodlights
 - Six very strong magnets
 - Adjustable clamp for scaffolding mounting
 - 4 wall plugs included for wall mounting
 - 2 pcs of M6 screws for fitting mounting included



Scaffolding holder



Magnet holder

INDEX NUMBERS

MAGNUM FUTURE LED - MATCHED TO YOUR NEEDS

In response to the market's needs, Lena Lighting offers Magnum Future users to choose basic parameters like power supply voltage (24V, 48V, 230V) or socket type (schuko, Polish-French, Danish, low-voltage).

index	moc	power connection	IP	sockets	plug type	protection class	switch	backlight option	weight [kg]
247200	32W	230V	IP54	-	UNI-SCHUKO	II	-	-	2,8
247217	32W	230V	IP54	-	CH	II	-	-	2,8
247224	32W	230V	IP54	-	DK	II	-	-	2,8
247002	32W	230V	IP54	2 x PL-FR	UNI-SCHUKO	I	-	-	3,0
247019	32W	230V	IP54	2 x SCHUKO	UNI-SCHUKO	I	-	-	3,0
247026	32W	230V	IP44	2 x DK	DK	I	-	-	3,0
247033	32W	230V	IP44	2 x CH	CH	I	-	-	3,0
247040	32W	230V	IP54	2 x PL-FR	UNI-SCHUKO	I	+	-	3,0
247057	32W	230V	IP54	2 x SCHUKO	UNI-SCHUKO	I	+	-	3,0
247064	32W	230V	IP44	2 x DK	DK	I	+	-	3,0
247071	32W	230V	IP44	2 x CH	CH	I	+	-	3,0
247088	32W	230V	IP54	2 x PL-FR	UNI-SCHUKO	I	+	+	3,0
247095	32W	230V	IP54	2 x SCHUKO	UNI-SCHUKO	I	+	+	3,0
247101	32W	230V	IP44	2 x SCHUKO	UNI-SCHUKO	I	+	+	3,0
247118	32W	230V	IP44	2 x DK	DK	I	+	+	3,0
247163	32W	240V	IP54	-	UK	II	-	-	2,8
247156	32W	240V	IP44	2 x UK	UK	I	-	-	3,0
247187	32W	240V	IP44	2 x UK	UK	I	+	-	3,0
247194	32W	240V	IP44	2 x UK	UK	I	+	+	3,0
247231	32W	110V	IP54	-	CEE	II	-	-	2,8
247248	32W	42V	IP54	-	CEE	III	-	-	2,8
247255	32W	42V	IP54	2 x CEE (2-PIN)	CEE	III	-	-	2,8
247262	32W	24V	IP54	-	CEE	III	-	-	2,8
247279	32W	24V	IP54	2 x CEE (2-PIN)	CEE	III	-	-	2,8
247286	32W	24V	IP54	-	TRAFO	III	-	-	2,8
247293	32W	12V	IP54	-	CAR	III	-	-	2,8



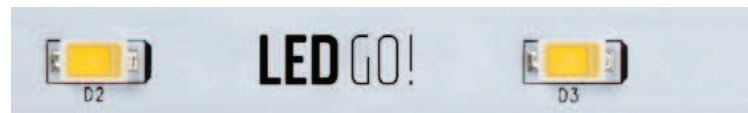
For our lamps, unlike in case of our competition, you can buy key components (diffuser, SMD LED board) for replacement. Such solution enables to extend the lifetime of the fitting in the work place.

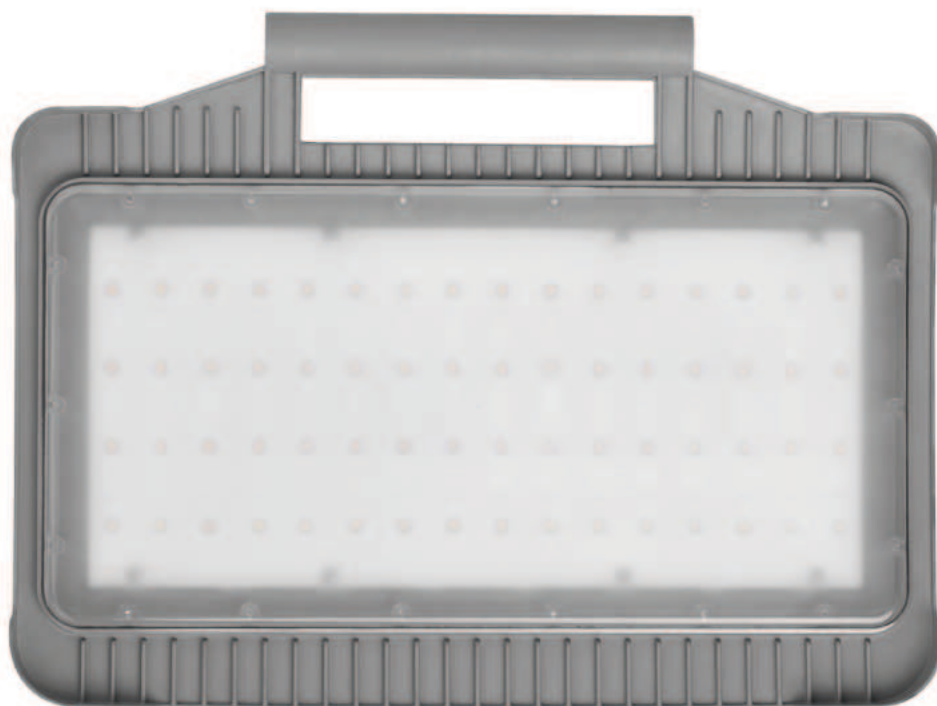




For 25 years Lena Lighting has been one of the leaders in the lighting industry. By developing the export to more than 55 countries all over the world, Lena Lighting has achieved the position of the unquestionable leader among Polish exporters of professional lighting. We produce a full range of architectural, industrial and street lighting as well as a wide variety of workplace lighting. We find the comfort of the user very important. Therefore we offer the fittings based on modern technologies and construction solutions adjusted to the needs of professionals representing various industrial branches. Before our products are released to the customers, they undergo a lot of tests resulting in their resistance to unfavourable conditions such as: dust, powder, lubricants and water that are common in workplaces.

Please visit us on www.lenalighting.pl to find our portfolio!





Lena Lighting S.A.
ul. Kórnicka 52
63-000 Środa Wlkp.
POLAND
www.lenalighting.pl

