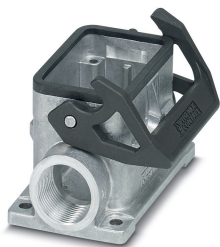


# Housing - HC-STA-B06-SLWS-2SSM20-ELC-AL - 1412821

Please be informed that the data shown in this PDF Document is generated from our Online Catalog. Please find the complete data in the user's documentation. Our General Terms of Use for Downloads are valid (<http://phoenixcontact.com/download>)



Box mounting bases B6, with single locking latch, material: Die-cast aluminum, salt water resistant, cable outlets: 2, lateral, height: 54.6 mm, cable gland: none, support sleeve: no, 2x M20, Standard

## Your advantages

- ✔ good shielding in the event of electromagnetic interference



## Key Commercial Data

|                                      |   |
|--------------------------------------|---|
| Packing unit                         | 1 pc  |
| GTIN                                 | <br>4 055626 060699 |
| GTIN                                 | 4055626060699   |
| Weight per Piece (excluding packing) | 188.100 g   |
| Custom tariff number                 | 85389099  |
| Country of origin                    | Poland  |
| Sales Key                            | BF7APB  |

## Technical data

### Dimensions

|        |         |
|--------|---------|
| Height | 54.6 mm |
| Width  | 52 mm   |
| Length | 84 mm   |

### Ambient conditions

|                                 |                   |
|---------------------------------|-------------------|
| Degree of protection (IP)       | IP66              |
|                                 | IP67              |
| Degree of protection (NEMA)     | 4 (UL 50e)        |
|                                 | 4X (UL 50e)       |
|                                 | 12 (UL 50e)       |
| Ambient temperature (operation) | -40 °C ... 125 °C |

# Housing - HC-STA-B06-SLWS-2SSM20-ELC-AL - 1412821

## Technical data

### General

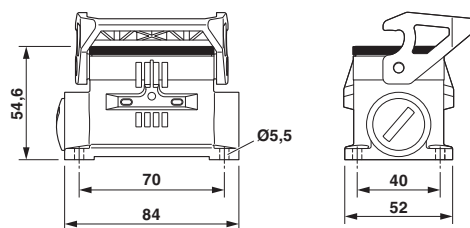
|  |   |
|--|---|
| Note                                   | For contact inserts HC-B6, BB10, DD24, M Tall housings for extra large wiring space     |
| Size                                   | B6  |
| Housing type                           | Box mounting bases  |
| Color                                  | gray aluminum   |
| Locking type                           | with single locking latch   |
| No. of cable outlets                   | 2   |
| Cable outlet                           | lateral   |
| Screw connection                       | none  |
| Type of the screw connection           | 2x M20  |
| Housing material                       | Die-cast aluminum, salt water resistant   |
| Housing surface material               | uncoated  |
| Seal material                          | NBR, conductive   |
| Material lock                          | PA  |
| Flammability rating according to UL 94 | V0 (Interlock)  |
| Assembly instructions                  | One opening is sealed with a plastic filler plug and can be opened using a screwdriver. |

### Environmental Product Compliance

|            |   |
|------------|---|
| China RoHS | Environmentally friendly use period: unlimited = EFUP-e |
|            | No hazardous substances above threshold values          |

## Drawings

Dimensional drawing



Dimensional drawing

## Classifications

eCl@ss

|               |          |
|---------------|----------|
| eCl@ss 10.0.1 | 27440202 |
| eCl@ss 11.0   | 27440202 |
| eCl@ss 5.1    | 27261200 |
| eCl@ss 6.0    | 27261200 |
| eCl@ss 7.0    | 27440202 |

# Housing - HC-STA-B06-SLWS-2SSM20-ELC-AL - 1412821

## Classifications

### eCl@ss

|            |          |
|------------|----------|
| eCl@ss 9.0 | 27440202 |
|------------|----------|

### ETIM

|          |          |
|----------|----------|
| ETIM 6.0 | EC000437 |
| ETIM 7.0 | EC000437 |

### UNSPSC

|             |          |
|-------------|----------|
| UNSPSC 13.2 | 31261501 |
| UNSPSC 18.0 | 31261501 |
| UNSPSC 19.0 | 31261501 |
| UNSPSC 20.0 | 31261501 |
| UNSPSC 21.0 | 31261501 |

## Approvals

### Approvals

#### Approvals

UL Recognized / cUL Recognized / EAC / DNV GL / EAC / cULus Recognized

#### Ex Approvals

### Approval details

|               |  |   |         |
|---------------|--|---|---------|
| UL Recognized |  | <a href="http://database.ul.com/cgi-bin/XYV/template/LISEXT/1FRAME/index.htm">http://database.ul.com/cgi-bin/XYV/template/LISEXT/1FRAME/index.htm</a> | E255026 |
|---------------|--|---|---------|

|                |  |   |         |
|----------------|--|---|---------|
| cUL Recognized |  | <a href="http://database.ul.com/cgi-bin/XYV/template/LISEXT/1FRAME/index.htm">http://database.ul.com/cgi-bin/XYV/template/LISEXT/1FRAME/index.htm</a> | E255026 |
|----------------|--|---|---------|

|     |  |  |                          |
|-----|--|--|--------------------------|
| EAC |  |  | RU C-<br>DE.AI30.B.01102 |
|-----|--|--|--------------------------|

|        |  |   |            |
|--------|--|---|------------|
| DNV GL |  | <a href="https://approvalfinder.dnvgl.com/">https://approvalfinder.dnvgl.com/</a> | TAE000037S |
|--------|--|---|------------|

# Housing - HC-STA-B06-SLWS-2SSM20-ELC-AL - 1412821

## Approvals

|     |  |                          |
|-----|--|--------------------------|
| EAC |  | RU C-<br>DE.BL08.B.00511 |
|-----|--|--------------------------|

|                  |  |
|------------------|--|
| cULus Recognized |  |
|------------------|--|

## Accessories

### Accessories

#### Corrugated pipe screw connection

Screw connection - WP-G HF IP66 M20 BK - 3240898



Cable gland, metric thread, IP66 protection, straight

Screw connection - WP-G HF IP69K M20 BK - 3240884



Cable gland, metric thread, IP68/69k protection, straight

Screw connection - WP-GA HF IP66 M20 BK - 3240926



Cable gland, metric thread, IP66 protection, angled

Screw connection - WP-GA HF IP69K M20 BK - 3240912



Cable gland, metric thread, IP68/69k protection, angled

## Housing - HC-STA-B06-SLWS-2SSM20-ELC-AL - 1412821

### Accessories

Screw connection - WP-GR HF IP66 M20 BK - 3240954



Cable gland, metric thread, IP66 protection, with strain relief

---

Screw connection - WP-GR HF IP69K M20 BK - 3240940



Cable gland, metric thread, IP68/69k protection, with strain relief

---

Screw connection - WP-G PP HF M20 - 3240998



Cable gland made from PP with metric thread, IP65 protection

---

Screw connection - WP-GT PP HF M20 - 3241012



Cable gland made from PP with metric thread, rotatable, IP54 protection

---

Screw connection - WP-G BRASS IP40 M20 - 3241047



Cable gland made from brass with metric thread, IP40 protection

---

## Housing - HC-STA-B06-SLWS-2SSM20-ELC-AL - 1412821

### Accessories

Screw connection - WP-GT BRASS M20 - 3241033



Cable gland made from brass with metric thread, rotatable, IP40 protection

---

Screw connection - WP-G BRASS IP65 M20 - 3241061



Cable gland made from brass with metric thread, IP65 protection

---

### Full screw connection

Cable gland - G-INS-M20-S68N-NNES-S - 1411163



Cable gland, cable gland material: Nickel-plated brass, external cable diameter 6 mm ... 12 mm, shielding: no, connecting thread: M20 x 1.5, color: silver, with O-ring

---

Cable gland - G-INSEC-M20-S68N-NCRS-S - 1411189



Cable gland, cable gland material: Nickel-plated brass, external cable diameter 9 mm ... 13 mm, shielding: yes, connecting thread: M20 x 1.5, color: silver, with O-ring

---

Cable gland - HC-M-KV-M20(1ASI) - 1584017



Metal screw connection for an AS-Interface flat-ribbon conductor, thread type M20

---

### Housing latches

## Housing - HC-STA-B06-SLWS-2SSM20-ELC-AL - 1412821

### Accessories

Replacement part - HC-STA-B06-SL-PLBK - 1412591



Single locking latch for B6 housing, HC-EVO....AL and HC-STA....AL

---

### Seal

Profile gasket - HC-B06-SP-CBK - 1411477



Profile gasket for HEAVYCON EVO supporting base element type B6, conductive

---

---