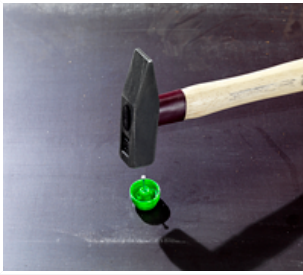


### End and transition bushes installation



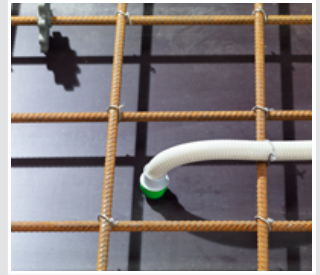
The flat front part ensures easy fixing with only one nail.



The new snap-in connection provides a safe connection between the front and rear parts.



Now insert the empty conduit into the bush holder as far as the stop.



The surrounding conduit lock retains the conduit securely in the holder and ensures the correct function of the empty conduit system

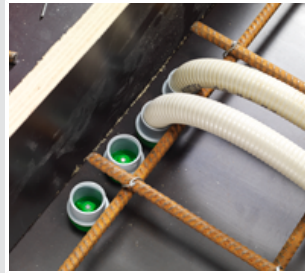
### Advantages - End and transition bushes



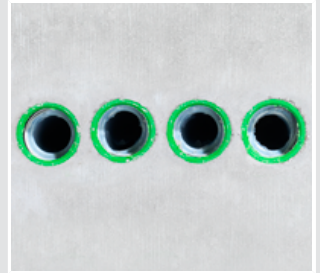
The new design makes it very easy to feed conduits ...



... even between close-fitting reinforcement bars.



The small design also allows many exits on a small wall or ceiling area.



After striking the formwork, there is only a minimal visible area in the concrete.

### Wall and ceiling transition 30° installation



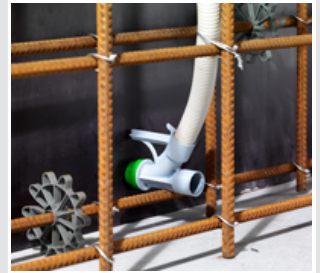
The flat front part ensures easy fixing with only one nail.



The new snap-in connection provides a safe connection between the front and rear parts.

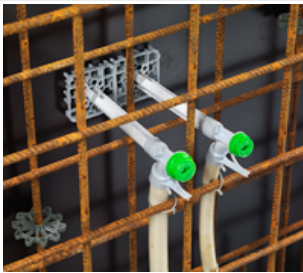


Now insert the empty conduit into the bush holder as far as the stop.



The surrounding conduit lock retains the conduit securely in the holder and ensures the correct function of the empty conduit system

### Advantages - Wall and ceiling transitions 30°



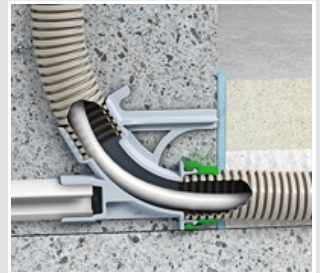
The support element holder for the new wall and ceiling transitions now allows .



... installation on the opposing formwork with support element and abutment.

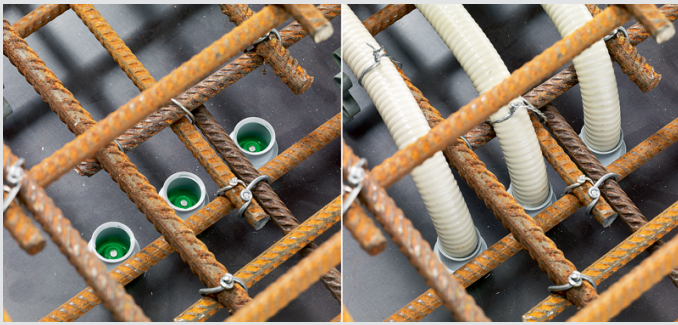


After striking the formwork, use a screwdriver for fast, easy opening of the plaster skin.



The optimal radius of the new transitions makes it easy to pull cables in.

## Examples of use



### End and transition bushing

- for connecting conduits or as ceiling exit
- closed off on formwork side with plaster skin
- suitable for all types of formwork



Diameter	35 mm
Height	36 mm
DIN EN conduit Ø	25 mm
Number of parts	2
Visible area Ø	28 mm
<b>Art. No.</b>	<b>1204-34</b>
Inner packing / shipping	25 / 100