

Colour Control Modules – DigiLED CA

The DigiLED CA series is based on a system design that combines simplicity, flexibility and reliability. The DigiLED CA series is suitable for operating both high-power RGB CA modules and low-power RGB CA modules.

In the simplest case, a keypad enables manual colour control. In addition to custom colour control, it is also possible to call up pre-set colour programs for example colour sequences.

Technical notes

Dimensions: 93 x 58 x 29 mm

Ambient temperature t_a : 0 to 45 °C

Operating voltage: 24 V

Max. current on the supply line: 5 A

Push-in terminals: 0.25–1.5 mm²,

grid: 3.5 mm

All DigiLED not suitable for the US market

DigiLED Manual CA

Colour controls via key pads (6 keys)

Individual colour control or selection of pre-set programs

t_c = 55 °C max.

Max. current per control channel: 1.25 A

Type: WU-ST-001-Digi-manuell-CA

Ref. No.: 186136

DigiLED DALI CA

Digital colour controls via DALI light management

t_c = 60 °C max.

Max. current per control channel: 1.25 A

Type: WU-ST-004-Digi-DALI-CA

Ref. No.: 186138

DigiLED DMX CA

Digital colour controls via DMX light management

t_c = 60 °C max.

Max. current per control channel: 1.25 A

Type: WU-ST-003-Digi-DMX-CA

Ref. No.: 186153

DigiLED IR CA

Colour adjustment by a portable remote control

Call up of pre-adjusted setting possible

Data transfer via infra-red

t_c = 55 °C max.

Max. current per control channel: 1.25 A

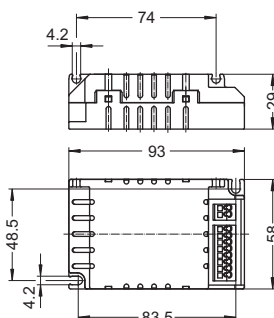
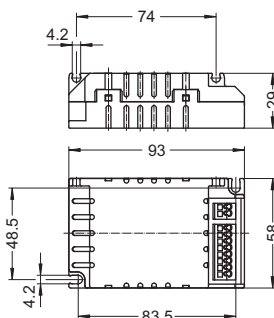
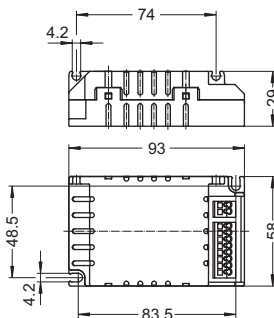
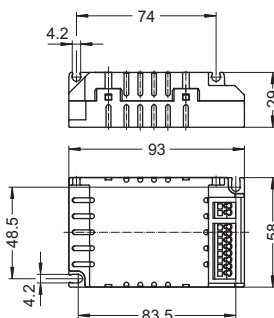
Type: WU-ST-005-Digi-IR-CA

Ref. No.: 186154

The CA series of VS colour control modules are available with both a manual operating pad and a DALI interface or "PUSH" or DMX variant.

Furthermore the DigiLED Mono is available.

The DigiLED Mono enables the dimming of single-colour (e. g. white) LED modules.



DigiLED Manual CA



DigiLED DALI CA



DigiLED DMX CA



DigiLED IR CA

1

2

3

4

5

6

7

8

9

10

DigiLED RF CA

Easy operation possible via radio frequency (RF) and a keypad with 7 buttons. The operation via radio frequency (RF) enables a flexible installation. Optical "line of sight" or cables are not necessary due to RF operation.

Dimensions: 93x58x29 mm

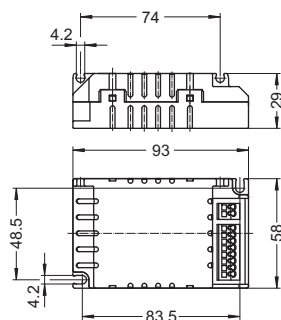
Ambient temperature t_c : -20 to 45 °C

Operating voltage: 24 V DC

Max. current per control channel: 1.25 A

Type: WU-ST-012-DigiLED-RF CA

Ref. No.: 186181



DigiLED RF CA

Walltransmitter

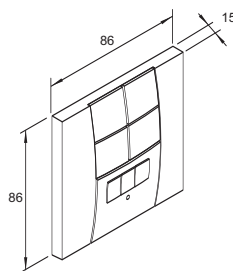
Required to activate the programs in the DigiLED RF

Dimensions: 86x86x15 mm

Colour: white

Type: WU-ST-009-Walltransmitter

Ref. No.: 536843



Walltransmitter

DigiLED Push CA

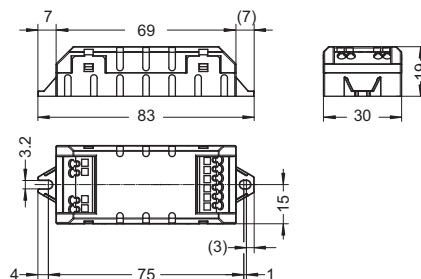
Colour adjustment by separate push button. Permits retrieval of pre-set programs

$t_c = 55$ °C max.

Max. current per control channel: 1.25 A

Type: WU-ST-006-DigiLED-Push CA

Ref. No.: 186144



DigiLED Push CA

DigiLED Mono CA

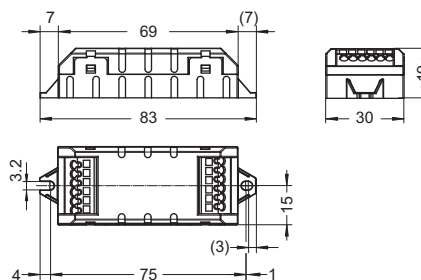
For dimming of single-colour LED modules. Dimming via 1-10 V interface or external PWM signal

$t_c = 55$ °C max.

Max. current per control channel: 5 A

Type: WU-ST-010-DigiLED-Mono CA

Ref. No.: 186155



DigiLED Mono CA

DigiLED Slave CA

Increase of the system performance for 24 V CA LED built-in system

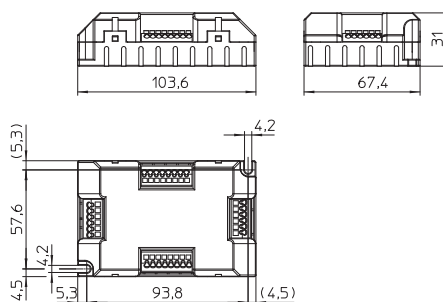
Signal amplification on channels RGB(W)

$t_c = 65$ °C max.

Max. current per control channel per slave: 1.25

Type: WU-ST-002-DigiLED-Slave CA

Ref. No.: 186142

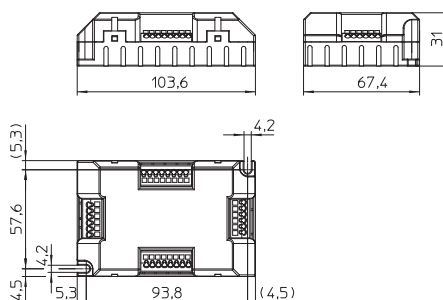


DigiLED Slave CA

Passive Slave CA

Increase of the system performance
for 24 V CA LED built-in system
No signal amplification on channels RGB(W)
 $t_c = 65\text{ }^\circ\text{C max.}$
Type: WU-ST-011-Passive-Slave CA

Ref. No.: 186172

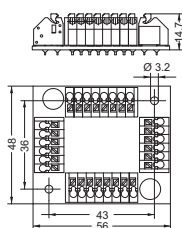


Passive Slave CA

Passive Slave PCB CA

PCB for increase of the system performance
for 24 V CA LED built-in system
Without casing
No signal amplification on channels RGB(W)
 $t_c = 65\text{ }^\circ\text{C max.}$
Type: WU-VB-004-Slave-PCB CA

Ref. No.: 186140



Passive Slave PCB CA

Table 1: Terminal connection

Pole	Colour coding	Function	Max. current-carrying capacity	Colour coding System flatband cable
1	red	supply line for LED built-in modules (+24 V)	5 A	blue
2	orange	PWM signal line for channel 1	1.25 A	grey
3	green	PWM signal line for channel 2	1.25 A	grey
4	blue	PWM signal line for channel 3	1.25 A	grey
5	light grey	PWM signal line for channel 4	1.25 A	grey
6	black	supply line for LED built-in modules (GND)	5 A	grey

1

2

3

4

5

6

7

8

9

10