

Customer

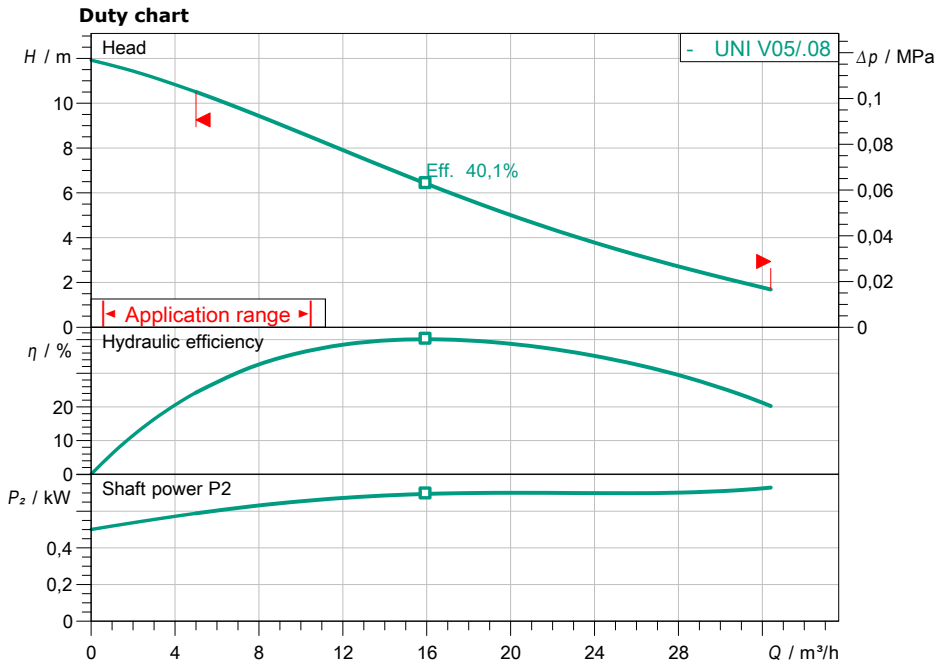
Technical data

Submersible sewage pump Rexa UNI V05/M08-523/A

Project name

Project ID
Installation location
Customer pos.no

Date 2019-01-25



Requested data

Flow	
Head	
Media	Water 100 %
Fluid temperature	20,00 °C
Density	998,30 kg/m³
Kin. viscosity	1,00 mm²/s

Hydraulic data (Duty point)

Flow	
Head	
Power input P1	
Total efficiency	

Product data

Submersible sewage pump	
Rexa UNI V05/M08-523/A	
Max. operating pressure	0,13 MPa
Fluid temperature	3 °C ... + 40 °C
Maximum submergence depth	7 m
Free ball passage	44 mm

Motordata per Motor/Pump

Type of motor	S 11.1-08/EAD1-2-M
Mains connection	1~ 230 V / 50 Hz
Permitted voltage tolerance	±10 %
Nominal speed	2812 1/min
Rated power P2	0,75 kW
Power input P1	1,04 kW
Rated current	4,80 A
Activation type	direct
Degree of protection	IP 68
Float switch	yes
Motor protection	Bimetall
Insulation class	F
Operating mode (immersed)	S1
Operating mode (non-immersed)	S2-15 min, S3-10%
Max. operating rate	30 1/h

Cable

Length of connecting cable	10 m
Cable type	H07RN-F
Cable cross section	3G1
Type of connecting cable	Detachable
Mains plug	Shock-proof

Fitting dimensions

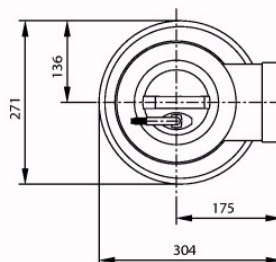
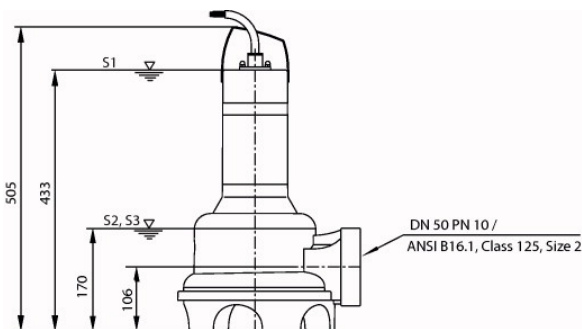
Pipe connection on the suction side	-
Pipe connection on the pressure side	DN 50,

Materials

Static seal	NBR
Impeller	PP-GF30
Mechanical seal	SiC/SiC
Sealing on motor side	Carbon/steatite
Pump housing	PP-GF30
Motor housing	1.4301
Pump shaft	1.4401 [AISI316]

Information for order placements

Weight approx.	14 kg
Item number	6082122



Contact
E-mail
Phone

Customer

Contact
E-mail
Phone

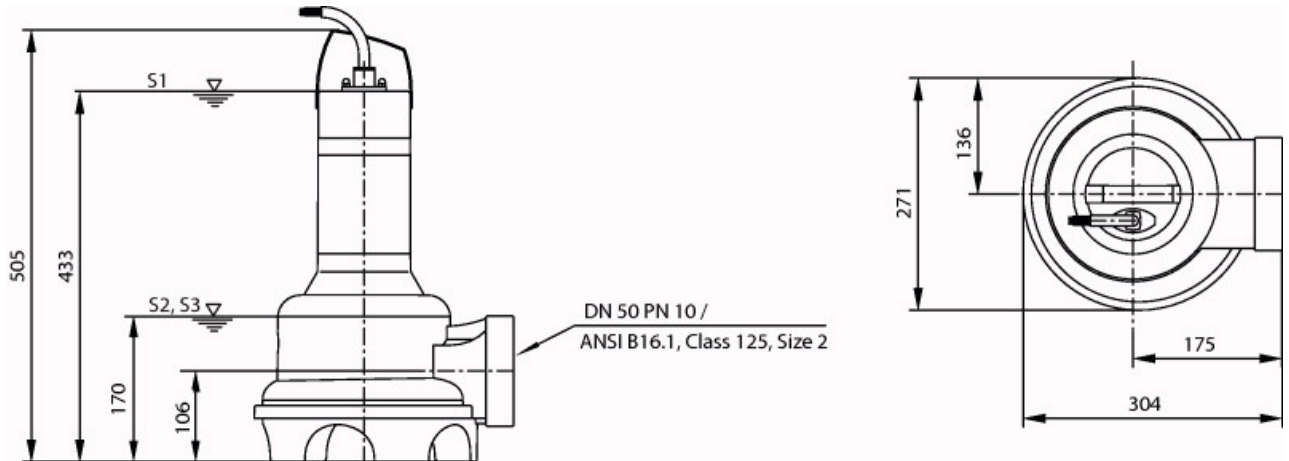
Dimensions

Submersible sewage pump
Rexa UNI V05/M08-523/A

Project name

Project ID
Installation location
Customer pos.no

Date 2019-01-25



Portable wet well installation

Suction side -, PN 10
Discharge side DN 50, PN 10

Dimensions mm

Name	Value	Name	Value	Name	Value	Name	Value
------	-------	------	-------	------	-------	------	-------